



2023-2024

MEMBERSHIP DIRECTORY



TURN TO PAGE 65 FOR

THE 2023 RTA CONFERENCE LEARNING JOURNAL

IN IT, YOU WILL FIND THE AGENDA,
ATTENDEE'S LIST, SPEAKERS,
EXHIBITORS, AND SPONSORS

DON'T MISS IT!

SEE JUST HOW THE RTA CONFERENCE
IS LIVIN' IT UP IN BUCKHEAD!



The Railway Tie Association was organized in 1919 as The National Association of Railroad Tie Producers, which grew out of predecessor groups dating back to the late 1800's. The name changed to The Railway Tie Association in 1932.

The purpose of the Association is to keep the wood tie market strong and sustainable. The Association is involved in research into crosstie design, and ongoing activities dealing with sound forest management, conservation of timber resources, timber processing, wood preservation and safety of industry workers.

The objectives of the Association include supporting the research and development of crosstie design, manufacture and use; collecting and providing industry statistics; developing and publishing specifications; promoting and maintaining high standards of quality for crossties; governmental affairs; cooperate closely with related organizations; conduct annual meetings; support seminars and other educational functions; and the printing of various publications.

We would like to gratefully acknowledge the companies that support the RTA by advertising on the tabs throughout this directory. Without their support, we would not have been able to publish and distribute this year's membership directory.

DISCLAIMER:

The Railway Tie Association proudly promotes the products and services of the wood tie industry in general. In so doing, it does not endorse, warrant or guarantee the products and services of any individual Association member versus another, nor does it warrant or guarantee the goods and services of specific members. Any such warranties or guarantees express or implied, are disclaimed. The information in this directory has been provided by the Association members themselves and is reproduced here for the convenience of the members and their customers.



TABLE OF CONTENTS

Producer Member Plants by Preservative Systems
 North America Producer Member Map.....4
 Key Listing of Producer Companies.....7

Alphabetical Listing by Section:

Direct Producers 11
 Suppliers (Preservative)..... 27
 Suppliers (Non-Preservative)..... 31
 Contractor/Consultants 41
 Waste Management/Recycling.....49
 Associate Members..... 55
 Global Members 56
 Honorary Members..... 56
 Index of Members..... 62
 Conference Journal..... 65

For more information about membership contact:

The Railway Tie Association
 131 Woodstone Dr.
 Vicksburg, MS 39183
 TEL: (770) 460-5553
 EMAIL: ties@rta.org
 WEBSITE: www.rta.org

NORTH AMERICAN TREATING FACILITIES & PROCESSES

*Asterisk indicates Boultonized Drying		Creosote P1	Creosote P1/oil	Creosote P2	Creosote Petroleum Solution	CuN #2 oil	CuN #4 oil	CuN other oil (specify)	Pentachlorophenol	ACZA	ACZA w/ET oil	ACZA w/creosote	ACZA w/DOT Borate
Acme Wood Preserving	Princeton WV			X*									
Amerities Holdings	The Dalles, OR	X*	X*	X*		X*							
	Hope, AR	X*	X*	X*									
Appalachian Timber Services	Sutton, WV				X*								
DECCO	Durango, CP, Mexico	X	X	X	X				X				
Gemini Forest Products	Los Alamitos, CA	X	X	X									
Intermountain Orient	Boise, Idaho												
Koppers	Ashcroft, BC, Canada	X*	X*	X*	X*								
	Florence, SC			X*	X*								
	Galesburg, IL			X*	X*								
	Guthrie, KY			X*	X*								
	North Little Rock, AR			X*	X*								
	Roanoke Valley, VA			X*	X*								
	Somerville, TX			X*	X*								
	Susquehanna, PA		X*	X*	X*								
McCord Tie and Timber	Falkville, AL	X*	X*	X*	X*								
Mellott Wood Preserving	Needmore, PA				X*		X*						
Missouri Tie	West Reynolds, MO			X*									
Perma Treat Corporation	Durham, CT			X*									
Stella-Jones	**Alexandria, LA			X*									
	**Bangor, WI			X*									
	Clanton, AL	X*		X*									
	**DuBois, PA			X*									
	Eloy, AZ												
	**Fulton, KY			X*									
	**Goshen, VA			X*									
	**McAlisterville, PA			X*									
	Montevallo, AL	X*		X*		X*							
	**Russellville, AR			X*									
	**Winslow, IN			X*									
	Delson QC, Canada	X*	X*						X*				
	Prince George, BC, Canada	X*	X*						X*				
	Truro, NS, Canada	X*	X*						X*				
**This plant has a Certified Quality Control in place that meets AAR M1003 standards													
Superior Tie & Timber	Vivian, LA			X									
Wheeler Lumber	Whitewood, SD					X							



NORTH AMERICAN TREATING FACILITIES & PROCESSES

*Asterisk indicates Boultonized Drying		Proprietary Boron/Creosote 1-step dual	DOT dual creosote pre-treat 'pressure' prior to Air Dry -	DOT dual creosote pre-treat 'dip' prior to Air Dry	DOT dual TruCor/creosote	DOT dual w/proprietary oil	Fixed boron based system	Fixed boron based system w/ dual oil	"Other (CCA, CA, ACQ, etc.)
Acme Wood Preserving	Princeton WV			X*					CCA
Amerities Holdings	The Dalles, OR								
	Hope, AR			X*					
Appalachian Timber Services	Sutton, WV								
DECCO	Durango, CP, Mexico			X					CCA
Gemini Forest Products	Los Alamitos, CA								
Gross & Janes Company	Camden, AR			X					
Intermountain Orient	Boise, Idaho								
Koppers	Ashcroft, BC, Canada								
	Florence, SC				X*				
	Galesburg, IL				X*				
	Guthrie, KY								
	North Little Rock, AR				X*				
	Roanoke Valley, VA				X*				
	Somerville, TX				X*				
	Susquehanna, PA				X*				
McCord Tie and Timber	Falkville, AL			X					
Mellott Wood Preserving	Needmore, PA			X					CuN- CuN w/ DOT Borate
Missouri Tie	West Reynolds, MO			X					
Perma Treat Corporation	Durham, CT								
Stella-Jones	**Alexandria, LA	X*							
	**Bangor, WI								
	Clanton, AL			X					
	**DuBois, PA								
	Eloy, AZ								
	**Fulton, KY	X*							
	**Goshen, VA	X*							
	**McAlisterville, PA								
	Montevallo, AL			X					
	**Russellville, AR	X*	X*						
	**Winslow, IN								
	Delson QC, Canada								CCA, ACQ
	Prince George, BC, Canada								CCA
	Truro, NS, Canada								CCA, 50/50 Penta/Boron
**This plant has a Certified Quality Control in place that meets AAR M1003 standards									
Superior Tie & Timber	Vivian, LA			X					
Wheeler Lumber	Whitewood, SD								

Legend for Other Treatments:

ACQ- Ammoniacal Copper Quaternary

ACZA- Ammoniacal Copper Zinc Arsenate

CA-AG Copper Azole with Wolman AG for consumer products

CCA- Chromated Copper Arsenate

CuN- Copper Napthenate

DRICON- Fire Retardant

ET- Proprietary Oil

PACBOR- Proprietary Borate

NORTH AMERICA DIRECT PRODUCER MEMBER KEY

Key	Company Name	Key	Company Name
AWP	Acme Wood Preserving, Inc.	NLC	Norman Lumber Co.
AH	AmeriTies Holdings LLC	NAT	North American Tie & Timber Co
ATI	Anthony Timberlands, Inc.	OML	P. T. O'Malley Lumber Company, Inc.
ATS	Appalachian Timber Services, Inc.	PTC	Perma Treat Corporation
BLC	Beal Lumber Company	SPC	Scott Post & Tie Co.
BPM	BPM Lumber, LLC	SMR	The Somerville Companies, Inc.
D	DECCO	SFI	Southern Forest Industries, Inc.
EFP	Eagle Forest Products	SJ	Stella-Jones Corp. (US)
EWP	Edwards Wood Products	SJI	Stella-Jones Inc.(Canada)
GFP	Gemini Forest Product	SUM	Sumitomo Canada Limited
HFP	Hunt Forest Products	STT	Superior Tie & Timber
IO	Intermountain Orient	TCF	Trans Canada Forest Products
KLBB	K. L. Barton & Sons Tie Company	TTT	Tie & Timber Technologies
KA	Koppers Ashcroft Inc.	WT	Ward Timber
K	Koppers Inc.	WL	Wheeler Lumber, LLC
MCT	McCord Tie and Timber	WGM	William G. Moore & Son, Inc. of Delaware
MCH	McCreary County Hardwoods, Inc.		
MWP	Mellott Wood Preserving, Inc.		
MT	Missouri Tie, Inc.		
NWS	Natural Wood Solutions		
NL	Netterville Lumber Company		



NATIONAL

RAIL

CHANGE OUTS
TRACK REMOVAL

TIES

DISTRIBUTION
REMOVAL & RECYCLING

Serving the worlds largest
transportation companies
for over 40 years.

National takes pride in
distinguishing ourselves by
the environmentally
responsible way we safely
remove, recover, and
restore these materials.

Contact Nick Mood
today at
800-795-3722
ext:225
Nick.Mood@nssccorp.com

NATIONAL
INDUSTRY
LEADER FOR
ON-TRACK
SERVICES.

NSSCCORP.COM

Our products ensure the safe, reliable movement of people and goods by rail.

In addition to creosote-treated crossties and switch ties, we specialize in bonded rail joints and track components for freight, transit, high-speed, and heavy haul needs. And, we offer railroad services, including engineering, design, repair, and inspection of railroad bridges.



Our products ensure the safe, reliable movement of people and goods by rail.

In addition to creosote-treated crossties and switch ties, we specialize in bonded rail joints and track components for freight, transit, high-speed, and heavy haul needs. And, we offer railroad services, including engineering, design, repair, and inspection of railroad bridges.



PRODUCER MEMBERS

ACME WOOD PRESERVING, INC.

914 So. Wickham Ave.
Princeton, West Virginia 24740
TEL: (304) 425-8769
FAX: (304) 425-1496
EMAIL: bnh.acmewood@frontiernet.net

Geographical Area Served: Worldwide

Products Produced or Sold: All railroad products; creosote and CCA pressure treated wood products; crossties; switch ties; bridge timbers; crossing timbers; posts; poles; pilings

Treatment Processes Used: Creosote: Boulton drying full cell/empty cell lowry process; ruping process

Website: www.acmewoodpreserving.com

Production Transportation Modes Available: Rail; Truck

Special Equipment or Manufacturing Services Offered: Incising; end plating; adzing; dowelling; fabrication; TSO; etc.

Physical Location: Same as Mailing

Contact: Bruce Hobbs, President
C. Dave Thompson, Sales Representative
(CCA Preserv)

AMERITIES HOLDINGS, LLC.

3865 Wolverine Street NE, Suite #13-E
Salem, Oregon 97305
TEL: (971) 374-1991
EMAIL: jthompson@amerities.com

Geographical Area Served: Western United States, South and Midwestern States

Products Produced or Sold: Treated Bridge Timbers, Crossties, Switch ties, Poles

Treatment Processes Used: Creosote; Borate Treatment

Production Transportation Modes Available: Union Pacific Railroad; Highway

Special Equipment or Manufacturing Services Offered: Framing & Incising Equipment for Bridge Timbers & other Products

Physical Location: Same as Mailing

Contact: Jeff Thompson, President

Plant or Other Locations:

AMERITIES WEST, LLC.

TEL: (541) 296-1808
EMAIL: lbliss@amerities.com

Geographical Area Served: Western United States

Products Produced or Sold: Treated Bridge Timbers, Crossties, Switch ties, Poles

Treatment Processes Used: CuN #2 and Copper Naphthenate

Production Transportation Modes Available: Union Pacific Railroad; Highway

Special Equipment or Manufacturing Services Offered: Framing & Incising Equipment for Bridge Timbers & other Products

The Dalles, Oregon

Contact: Lance Bliss, Plant Manager

AMERITIES SOUTH, LLC.

TEL: (870) 722-6222
EMAIL: whargraves@amerities.com

Geographical Area Served: South and Midwestern States

Products Produced or Sold: Crossties and Switch ties

Treatment Processes Used: Creosote; Borate Treatment

Production Transportation Modes Available: Union Pacific Railroad; Highway

Hope, Arkansas

Contact: Wayne Hargraves, Plant Manager

ANTHONY TIMBERLANDS, INC.

P. O. Box 128
Beirne, Arkansas 71721
TEL: (870) 353-2517
FAX: (870) 353-4139

Website: www.anthonytimberlands.com

Geographical Area Served: United States, Canada and Mexico. Export Available

Products Produced or Sold: Hardwood lumber, crossties, switch ties, timbers

Physical Location: 16243 Highway 51 South, Gurdon, AR 71743

Contact: Mike McQueen, Vice President atioak@gmail.com
Yolanda Calley, Sales Mngr.
atihardwoodsales@gmail.com
Ronnie Fowler, Sales
rfowler@anthonytimberlands.com

PRODUCER MEMBERS

ANTHONY TIMBERLANDS, INC. (CONTINUED)

Species: Primarily Red and White Oak - Mixed Hardwood

Production Transportation Modes Available: UP Rail; Truck

Plant or Other Locations:

MOUNT HOLLY, AR:

170 Mill Road

Mount Holly, Arkansas 71758

Telephone: 870-554-2466

Fax: 870-554-2476

Contact: Chris McQueen, Manager, chrismcqueen@gmail.com

Geographical Area Served: United States, Canada, and Mexico. Export Available

Products Produced or Sold: Hardwood lumber, crossties, switch ties, timbers

Species: Primarily Red and White Oak - Mixed Hardwood

Production Transportation Modes: Truck

MAGNOLIA, AR

520 West Garland

Magnolia, Arkansas 71753

Phone: 870-234-2310

Contact: Chris McQueen, Manager, chrismcqueen@gmail.com

Geographical Area Served: United States, Canada, and Mexico. Export Available

Products Produced or Sold: Hardwood lumber, crossties, switch ties, timbers

Species: Primarily Red and White Oak - Mixed Hardwood

Production Transportation Modes: PTM Rail, Truck

ANTHONY HARDWOOD COMPOSITES

PO Box 490

Sheridan, Arkansas 72150

Phone: 870-942-4000

Fax: 870-942-4040

Email: info@anthonycomposites.com

Website: www.anthonytimberlands.com

Products: Engineered Mats

ANTHONY WOOD TREATING

300 Gunter Street

Hope, Arkansas 71801

Phone: 870-777-8871

Fax: 870-777-8987

Treatment Processes Used: MCQ pressure treated for southern pine

Production Transportation Modes: UP Rail, Truck

APPALACHIAN TIMBER SERVICES, LLC

393 Edgar Given Parkway

Sutton, West Virginia 26601

FAX: (304) 765-3788

TEL: (304) 765-7393

Geographical Area Served: South & East

Products Produced or Sold: Railroad crossties; switch ties; bridge timbers; crossing timbers

Treatment Processes Used: Creosote

Production Transportation Modes Available: Truck; Rail

Special Equipment or Manufacturing Services Offered: Adz, Prebore, Dap, Size

Plant or Other Locations: Marty Mace, Plant Manager; Tel: (304) 765-7393; Fax: (304) 765-3788

Physical Location: Same as mailing address

Contact: Richard Gibson, President

PRODUCER MEMBERS

BEAL LUMBER CO., INC.

P.O. Box 409
Little Mountain, South Carolina 29075 (Sales Location)
TEL: (803) 932-2100
FAX: (803) 945-2100
EMAIL: fsbeal@beallumber.com

**Physical Location: 1041 Berley-Boland Rd.,
Prosperity, SC 29127**
Contact: Frank S. Beal, Jr., President

Geographical Area Served: Southeast United States
Products Produced or Sold: Lumber, Hardwood Timbers, Switch Ties and Crossties
Production Transportation Modes Available: Truck, NS and CSX Rail
Special Equipment or Manufacturing Services Offered: Bandmill; Resaw; D.E.T.
Plant or Other Locations: Mill Location: 1370 Spartanburg Highway, Jonesville, SC 29353

BPM LUMBER, LLC

1256 Manchester Street
Lexington, Kentucky 40504
TEL: (859) 859-685-1120
FAX: (859) 252-6964
EMAIL: jfoley@bpmlumber.com

Physical Location: Same as mailing address
Contact: John E. Foley, President

Geographical Area Served: United States Canada
Products Produced or Sold: Green ties
Website: www.bpmlumber.com
Product Transportation Modes Available: CSX and NS rail siding; Truck
and inspection of railroad and industrial specialty wood products, such as blocks, wedges, wheel clocks and bridge material.

DECCO

Av. Insurgentes No. 682-703B
Col. Del Valle
Ciudad de Mexico 03103
TEL: 011-5255-5681-0040
FAX: 011-5255-5668-7395
EMAIL: jaime.escobar@comdecco.com; joseluis.avila@comdecco.com; alejandro.autrique@comdecco.com

Physical Location: Same as mailing address
Contact: Alejandro Autrique, President
Javier Ochoa, Plant Manager
José Luis Avila, Sales Manager
Jaime Escobar, International Sales

Geographical Area Served: North and South America
Products Produced or Sold: Crossties & Switch Ties, Bridge Timbers, Crossing Timbers - Hardwood and Softwood; Utility and Telephone Poles
Treatment Processes Used: Creosote, Penta, CCA, Borate, Waterborne
Website: www.comdecco.com
Production Transportation Modes Available: Rail; Truck
Special Equipment or Manufacturing Services Offered: Difficult or unusual sizes

EDWARDS WOOD PRODUCTS, INC.

PO Box 219
Marshville, North Carolina 28103
TEL: (704) 624-5098
FAX: (704) 624-6812
EMAIL: jeffedwards@ewpi.com

**Physical Location: 2215 Old Lawyers Rd.,
Marshville, NC 28103**
Contact: Jeff Edwards, President

Geographical Area Served: North America and International Markets
Products Produced or Sold: Wooden pallets, cut stock, grade lumber, crane mats, bridge mats, crossties, switch ties, flooring, lumber, cants, chips, bark and dust
Treatment Processes Used: Pallet heat treatment, dry kilns & dipping
Production Transportation Modes Available: In-house truck fleet
Special Equipment or Manufacturing Services Offered: Hardwood sawmill, Pine sawmill, Pallet manufacturing, Chip mill, crane mats and bridge mats

PRODUCER MEMBERS

EDWARDS WOOD PRODUCTS, INC. *(CONTINUED)*

Plant or Other Locations: Peachland, Laurinburg and Liberty, NC, and Manning, SC
Rail Loading Points: Peachland & Laurinburg, NC

EAGLE FOREST PRODUCTS, LLC

PO Box 2119
Eagle, Idaho 83616
TEL: (208) 985-1776
EMAIL: wpiatt@eaglefp.net

Physical Location: 222 West State St.,
Eagle, Idaho 83616
Contact: Wes Piatt, Sales

Geographical Area Served: North America
Products Produced or Sold: Treated Bridge Timbers; Crossties - Crossing Timbers, Piling
Treatment Processes Used: QNAP, Creosote
Website: www.eaglefp.net

GEMINI FOREST PRODUCTS

P. O. Box 105
Los Alamitos, California 90720
TEL: (562) 594-8948
FAX: (562) 430-6763
EMAIL: tod@geminiforest.com

Physical Location: 10608 Los Alamitos Blvd.,
Los Alamitos, CA 90720
Contact: Tod Pollard, President

Geographical Area Served: United States; Canada and all export
Products Produced or Sold: Crossties; switch ties; bridge timbers; poles; piling; railroad car decking and blocking (oak; MHW; SYP; douglas fir; mix western species)
Treatment Processes Used: Creosote; Penta; ACZA; ACQ
Production Transportation Modes Available: Truck; Rail; Container
Special Equipment or Manufacturing Services Offered: Boring; planing; tongue and groove; ship lap; specialty resaw & reman

INTERMOUNTAIN-ORIENT, INC.

P.O. Box 8288
Boise, Idaho 83707
TEL: (208) 384-5600
FAX: (208) 384-5858
EMAIL: jmc@intermountain-orient.com; ken@intermountain-orient.com

Physical Location: 1447 Tyrell Lane, Boise, ID 83706
Contact: Mike Clements, President
Ken Hessing, Sales

Geographical Area Served: 50 States
Products Produced or Sold: Crossties, Switch Ties, Bridge Timbers, Wood Pilings, Utility Poles
Treatment Processes Used: Creosote, ACQ, ACZA, Copper Naphthenate, Pentachlorophenol
Website: www.Intermountain-Orient.com
Production Transportation Modes Available: Railcars, Truckload

PRODUCER MEMBERS

K. L. BARTON & SONS TIE COMPANY

P. O. Box 540
Garrison, Texas 75946
TEL: (936) 347-2744
FAX: (936) 347-5162
EMAIL: klbarton@windstream.net

**Physical Location: U.S. Hwy. 59, South 710,
Garrison, TX 75946**

Contact: Bob J. Barton, President

Geographical Area Served: East Texas; Western Louisiana; ship to anywhere by UP or BNSF or truck

Products Produced or Sold: Crossties

Production Transportation Modes Available: Truck; Rail - Union Pacific - BNSF

Contracting or Consulting Services Offered: Crossties

Special Equipment or Manufacturing Services Offered: Loading of any type of railcar

KOPPERS INC.

436 Seventh Avenue
Pittsburgh, Pennsylvania 15219
TEL: (888) 567-8437
TEL: (412) 227-2367;
TEL: (412) 227-2400
EMAIL: LeidyBJ@koppers.com
EMAIL: McDonaldJP@koppers.com

Physical Location: Same as mailing address

Contact: Commercial Railroad Products & Services

Ben Leidy, Director - Commercial Sales

John P. McDonald, Director of Sales, Class 1

KOPPERS INC. - Ashcroft, British Columbia

Patrick Sullivan, Plant Manager

Products Produced or Sold: Grade crossties; industrial ties; switch ties; bridge timbers/lumber

Treatment Processes Used: 50/50, P-1

Product Transportation Modes Available: Truck; Rail - CP and CN

KOPPERS INC. - Florence, South Carolina

Cory Bishop, Plant Manager

Products Produced or Sold: Grade crossties; industrial ties; switch ties; bridge timbers/lumber; pre-plated ties

Treatment Processes Used: CPS, Borate

Product Transportation Modes Available: Truck; Rail - CSX

KOPPERS INC. - Galesburg, Illinois

James Evans, Plant Manager

Products Produced or Sold: Grade crossties; industrial ties; switch ties; pre-plated ties

Treatment Processes Used: CPS, Borate

Product Transportation Modes Available: Truck; Rail - BNSF

KOPPERS INC. - Guthrie, Kentucky

Ryan Headlee, Plant Manager

Products Produced or Sold: Grade crossties; industrial ties; switch ties; pre-plated ties

Treatment Processes Used: CPS, Borate

Product Transportation Modes Available: Truck; Rail - CSX

KOPPERS INC. - Montgomery, Pennsylvania

Al Rutz, Plant Manager

Geographical Area Served: Northeast

Products Produced or Sold: Grade crossties; industrial ties; switch ties; bridge timbers/lumber; pre-plated ties

Treatment Processes Used: P-2, CPS

Product Transportation Modes Available: Truck; Rail - NS/CPR

KOPPERS INC. - North Little Rock, Arkansas

Chris Martin, Plant Manager

Products Produced or Sold: Grade crossties; industrial ties; grade crossing panels; bridge timbers/lumber; pre-plated ties

Treatment Processes Used: CPS

Product Transportation Modes Available: Truck; Rail - Union Pacific and BNSF

PRODUCER MEMBERS

KOPPERS INC. (CONTINUED)

KOPPERS INC. - Roanoke, Virginia

Travis Yeoman, Plant Manager

Products Produced or Sold: Grade crossties; industrial ties; switch ties; bridge timbers/lumber

Treatment Processes Used: CPS, Borate

Product Transportation Modes Available: Truck; Rail - NS

KOPPERS INC. - Somerville, Texas

Mike McHugh, Plant Manager

Products Produced or Sold: Grade crossties; industrial ties; switch ties; pre-plated ties; poles & piling

Treatment Processes Used: CPS; Borate

Product Transportation Modes Available: Truck; Rail - BNSF

MCCORD TIE AND TIMBER, INC.

P.O. Box 677

Falkville, Alabama 35622

TEL: (888) 784-6284

FAX: (256) 784-6287

EMAIL: Mitchell@mccordtieandtimber.com;

Jay@mccordtieandtimber.com; Alan@mccordtieandtimber.com

**Physical Location: 4384 Highway 31 SW,
Falkville, AL 35622**

Contact: Mitchell McCord, President
Jay McCord, Procurement
Alan Cox, Sales Manager

Geographical Area Served: Truck delivery throughout the southeast, including: Alabama, Georgia, Florida, Mississippi, Louisiana, Texas, Arkansas, Tennessee, Kentucky, North and South Carolina. Rail delivery via centerbeam railers or gondolas is also available nationwide

Products Produced or Sold: Creosote treated wood products, including crossties, switch ties, tie plugs, bridge timbers, and grade railroad crossings.

Treatment Processes Used: Treatment of air-seasoned material and boultonized material via empty cell process

Product Transportation Modes Available: Delivery available by truck or railcar (centerbeam or gondola)

Special Equipment or Manufacturing Services Offered: Ability to mechanically insert s-irons and apply end-plates; operations of timber sizes for railroad crossings and ability to incise all material for treatme

MCCREARY COUNTY HARDWOODS, INC.

P. O. Box 487

Pine Knot, Kentucky 42635

TEL: (606) 354-2311

FAX: (606) 354-9001

Geographical Area Served: Southeastern U.S.

Products Produced or Sold: Green crossties

Product Transportation Modes Available: Rail; Truck

**Physical Location: 741 Southern Hwy.,
Pine Knot, KY 42635**

Contact: David Hatfield, Vice President

MELLOTT WOOD PRESERVING, INC.

P. O. Box 209

Needmore, Pennsylvania 17238

TEL: (717) 573-2519

FAX: (717) 573-4534

EMAIL: dougmellott@mellottwood.com & howardtomlinson@mellottwood.com

**Physical Location: 1398 Sawmill Road,
Needmore, PA 17238**

Contact: Douglas D. Mellott, Vice President
Howard A. Tomlinson, VP Manufact. & Sales

Geographical Area Served: Northeast; Canada

Products Produced or Sold: Crossties; switch ties; bridge ties

Treatment Processes Used: Copper Naphthenate, Borate

Production Transportation Modes Available: Rail; Truck

Special Equipment or Manufacturing Services Offered: Self-unloading trucks

PRODUCER MEMBERS

MISSOURI TIE, LLC

8324 Hwy. 72
Bunker, Missouri 63629
TEL: (573) 689-2040
FAX: (573) 689-2120
EMAIL: mike@missouritie.com; matt@missouritie.com

Geographical Area Served: United States and Canada

Products Produced or Sold: 6x8 and 7x9 Crossties; 7x9 Switch Ties; Bridge Ties; Full Depth Crossing Timbers

Treatment Processes Used: Creosote, Borate

Production Transportation Modes Available: Trucks to anywhere in the U.S. or Canada. Rail shipments originating on Union Pacific BNSF or CN.

Physical Location: Same as mailing address

Contact: Mike McNail, Vice-President
Matt Seal, General Manager

NATURAL WOOD SOLUTIONS, LLC.

P.O. Box 130 (Corporate Address)
Mooreville, Mississippi 38857
TEL: (662) 871-1625 - Operations
TEL: (662) 891-6093 - Sales
EMAIL: cbenefield@naturalwoodsolutions.com;
blindsey@naturalwoodsolutions.com

Geographical Area Served: United States, Canada, Mexico

Products Produced or Sold: Crossties, Switch Ties, Full Depth Timber Road Crossing Panels, Bridge Ties and Timbers, Industrial Lumber and Specialty Products (Hardwood or Dense Pine)

Treatment Processes Used: Creosote, Copper Naphthenate, Borate Dual Treatment, CCA, ACZA

Contracting or Consulting Services Offered: Quality Control and Inventory Management Systems

Website: www.naturalwoodsolutions.com

Production Transportation Modes Available: Trucks to anywhere in the U.S. & Canada. Rail shipments originating on CSX, UP, BNSF, & PTRRA

Physical Location: 276 Pennington Lake Rd.,
Nettleton, MS 38858

Contact: Shane Kitchens, Co-Owner (Technical &
New Business Development)
Brian Lindsey, Co-Owner (Operations)
Cole Benefield, Sales
Jeff Broadfoot, Sales

NETTERVILLE LUMBER COMPANY

P. O. Box 857
Woodville, Mississippi 39669
TEL: (601) 888-4343
FAX: (601) 888-6469
EMAIL: matthew@nettervillelumber.com

Website: www.nettervillelumber.com

Geographical Area Served: Global

Special Equipment or Manufacturing Services Offered: Able to cut up to 30' long cross ties, able to cut specialized timber sizes

Products Produced or Sold: Lumber, crossties, molding, laminate mats, crane mats

Product Transportation Modes Available At This Site: Truck Container

Physical Location: 3975 Buffalo Rd.,
Woodville, MS, 39669

Contact: Matthew Netterville, Operations Manager

NORMAN LUMBER COMPANY

A.K.A. Arneson Timber Company
922 South Brentwood Blvd.
St. Louis, Missouri 63105
TEL: (314) 692-9999
FAX: (314) 692-2499
EMAIL: info@normanlumber.com

Geographical Area Served: United States, Canada and Mexico

Products Produced or Sold: Blocks and Wedges, Crossties, Bridge Ties and Timbers, Tie Plugs, Switch Ties, Car Decking, Utility Poles, Plywood, Sign Posts, Custom Projects.

Treatment Processes Used: Creosote; Penta; CCA; ACQ; CA; Borate-Flame Retardant; MCA

Production Transportation Modes Available: Truck, Rail, Ship Containers

Physical Location: Same as mailing address

Contact: N. Arne Arneson, Chairman
Peder Arneson, President

PRODUCER MEMBERS

NORTH AMERICAN TIE & TIMBER LLC

6 NE 63rd St., Suite 350

Oklahoma City, Oklahoma 73105

TEL: (405) 463-6700

FAX: (866) 710-9223

EMAIL: ggodson@tieandtimber.com; thelms@tieandtimber.com

Geographical Area Served: United States, Canada, and Mexico

Products Produced or Sold: Crossties, Switch Ties, Timbers, Bridge Timbers, Crossings, Timber Framing Services (Species: Oak, Mixed Hardwoods, Western Softwoods, Southern Yellow Pine)

Production Transportation Modes Available: Truck or Rail (loading points on Union Pacific, Canadian Pacific, Kansas City Southern, Norfolk Southern, BNSF, Paducah & Louisville, Canadian National)

Rail Loading Points: Hope, AR; The Dalles, OR

Physical Location: Same as mailing address

Contact: Gene Dodson, Manager

(931) 723-2062 or Cell (405) 620-2688

Will Cumberland, Procurement Manager

Cell (662) 574-9286

Tony Helms, Sales Manager

Cell (479) 970-2875

PERMA TREAT CORPORATION

74 Air Line Drive

Durham, Connecticut 06422

TEL: (860) 349-1133

FAX: (860) 349-1365

Geographical Area Served: New England and points south and west

Products Produced or Sold: Crossties; switch ties; bridge timbers; crossing packages; hardwood grade & construction lumber; landscape products; custom treating service

Treatment Processes Used: Air dry/Boulton dry; creosote pressure treating

Contracting or Consulting Services Offered: Tie disposal; wood waste disposal

Product Transportation Modes Available: Rail siding - PAR system; tractor trailer

Special Equipment or Manufacturing Services: Environmentally safe tie disposal is available

Plant or Other Locations:

PERMA TREAT MAINE 26 Green St., Mattawamkeag, ME 04459, TEL: (207) 736-3011 FAX: (207) 736-3329

Specializing in environmentally safe tie disposal. Full kiln capacity

Physical Location: Same as mailing address

Contact: David A. Fink, President

Donald G. Ponko, General Manager

P.T. O'MALLEY LUMBER CO., INC.

1030 Batavia Farm Rd.

Baltimore, Maryland 21237

TEL: (410) 477-0500

FAX: (410) 477-2439

Geographical Area Served: United States

Products Produced or Sold: Blocks; wedges; car flooring; plywood; switch ties; tie plugs; tapered plugs; pallets

Treatment Processes Used: Creosote; Penta; CCA, ACQ

Production Transportation Modes Available: Truck

Special Equipment or Manufacturing Services: Cut to size; fabrication; lamination

Physical Location: Same as mailing address

Contact: William Crowther, Plant Manager

SCOTT POST & TIE COMPANY, INC.

11060 Hwy 60 West

Poplar Bluff, Missouri 63901

TEL: (573) 714-1115

FAX: (573) 778-9588

EMAIL: shaundahite@hotmail.com

Geographical Area Served: Mid America - North America

Products Produced or Sold: Ties, Timber, Post, Southern Yellow Pine, Oak, Mixed Hardwoods, Road Crossings, Bridge Timbers

Treatment Processes Used: Creosote P2 - Treatment of air dried material

Special Equipment or Manufacturing Services Offered: Kiln Dry - S4S - Incising for bridge timbers, end plating, custom treating

Product Transportation Modes Available: Trucks to anywhere in the United States

Physical Location: Same as mailing

Contact: Shaunda Scott Hite, President/Owner

PRODUCER MEMBERS

THE SOMERVILLE COMPANIES, INC.

8115 Preston Road, #690
Dallas, Texas 75225
TEL: (214) 369-7576
FAX: (214) 369-7579

Physical Location: Same as mailing address

Contact: Bill Somerville, President
Tom Somerville, Vice President

Geographical Area Served: Texas; Louisiana; Arkansas; Mississippi; Missouri; Tennessee and Alabama

Products Produced or Sold: Crossties; switch ties; panel ties; cants; hardwood lumber; pine lumber

Contracting or Consulting Services Offered: Operates as a green cross ties contractor for the railroads investing and servicing sawmill operations primarily for the procurement of railroad crossties

SOUTHERN FOREST INDUSTRIES, INC.

P. O. Box 373
Smarr, Georgia 31086
TEL: (478) 994-0000
FAX: (478) 994-0004
EMAIL: mstrickland@southernforest.us

**Physical Location: 3794 Old Macon Rd.,
Forsyth, GA 31029**

Contact: Matt Stickland, President

Geographical Area Served: Eastern United States

Products Produced or Sold: Green crossties; timbers, lumber, chips

Product Transportation Modes Available: NS railway; Truck

STELLA-JONES CORP.

U.S. HEADQUARTERS

Park West One, Suite 500
1000 Cliff Mine Road
Pittsburgh, PA 15275
TEL: (800) 272-8437
TEL: (304) 532-3932
FAX: (412) 774-1689

Physical Location: Same as mailing address

Contact: Patrick Kirkham, Sr., Vice
President Operations
Jim Raines, Vice President Global Tie Sales
David Whitted, VP Operations &
Production Planning

Geographical Area Served: North America and Export

Website: www.stella-jones.com

Plant or Other Locations - U.S. -

ALEXANDRIA, LA

3600 Koppers Street
Alexandria, LA 71302
TEL: (318) 442-5733
FAX: (888) 959-3131

Contact: Todd Hendricks, Plant Manager
Justin Runyon, Sales Manager
(520) 631-4283

Geographical Area Served: North America and Export

Products Produced or Sold: Crossties, Switch ties

Treatment Processes Used: Creosote, 2-Step Borate

Production Transportation Modes Available: Rail - Union Pacific, Kansas City Southern; Truck

Special Services Offered: Pre-Plating

BANGOR, WI

W 1038 County Road U
Bangor, WI 54614
TEL: (608) 486-2700
FAX: (608) 486-4538

Contact: Ryan Peterson, Plant Manager
Craig Cook, Sales Manager (218) 282-3002

Geographical Area Served: North America and Export

Products Produced or Sold: Crossties, Switch ties, Crossing timbers

Treatment Processes Used: Creosote

Product Transportation Modes Available: Rail - Canadian Pacific; Canadian National; BNSF; Truck

Special Services Offered: Pre-Plating

PRODUCER MEMBERS

STELLA-JONES CORP. (CONTINUED)

CLANTON, AL

100 McKinney Drive
Clanton, AL 35045
TEL: (205) 280-3950

Contact: Jeff Jordan, Plant Manager
Eddie Horton, Sales Manager
(304) 488-9936

Geographical Area Served: North America and Export

Products Produced or Sold: Crossties, Switch ties

Treatment Processes Used: Creosote, Borate

Product Transportation Modes Available: Rail - CSX; Truck

DUBOIS, PA

392 Larkeytown Road
DuBois, PA 15801
TEL: (814) 371-7331
FAX: (814) 375-0946

Contact: Mike Rosiek, Plant Manager
Gary Young, Director of Commercial
Railway Tie Sales (724) 480-8438

Geographical Area Served: North America and Export

Products Produced or Sold: Crossties, Switch ties, Bridge timbers, Highway Crossing timbers

Treatment Processes Used: Creosote

Product Transportation Modes Available: Buffalo & Pittsburgh; Truck

Special Services Offered: Panel Bridges, Prefabricated Crossings, Pre-Plating

ELOY, AZ

P.O. Box 968
Eloy, AZ 85231
TEL: (520) 466-7801
FAX: (520) 466-3607

Contact: Bob Schuh, Sales Manager (520) 466-7801

Geographical Area Served: North America and Export

Products Produced or Sold: Crossties, Switch ties, Crossing timbers, Bridge timbers

Treatment Processes Used: Creosote, Borate

Product Transportation Modes Available: Rail-UP; Truck

FULTON, KY

3855 US Highway 51 S.
Fulton, KY 42041
TEL: (270) 472-5557
FAX: (270) 472-5559

Contact: Adam Cooper, Plant Manager
Tim Brown, Sales Manager (412) 639-0105

Geographical Area Served: United States; Canada; Mexico and South America

Products Produced or Sold: Crossties, Switch ties

Treatment Processes Used: Creosote, 2-step Borate

Product Transportation Modes Available: Rail - Canadian National, Truck

Special Services Offered: Pre-Plating

GOSHEN, VA

9223 Maury River Road
Goshen, VA 24439
TEL: (540) 997-9251
FAX: (540) 997-0047

Contact: Ed Silva, Plant Manager
Eddie Horton, Sales Manager (304) 488-9936

Geographical Area Served: North America and Export

Products Produced or Sold: Crossties, Switch ties, Bridge timbers, Crossing timbers

Treatment Processes Used: Creosote, 2-step Borate, Copper Naphthenate

Product Transportation Modes Available: Rail - Buckingham Branch; CSX, NS, Truck

Special Services Offered: Panel bridges, Prefabricated Crossings, Pre-Plating

MCALISTERVILLE, PA

5865 State Route 235
TEL: (717) 463-2131

Contact: Kolby Moist, Plant Manager

PRODUCER MEMBERS

STELLA-JONES CORP. (CONTINUED)

FAX: (717) 463-3998

Geographical Area Served: North America and Export

Products Produced or Sold: Crossties, Switch ties, Tie plugs

Treatment Processes Used: Creosote, Borate

Product Transportation Modes Available: Truck

Special Services Offered: Pre-Plating

Gary Young, Director of Commercial
Railway Tie Sales (724) 480-8438

MONTEVALLO, AL

1051 Highway 25 South

Brierfield, AL 35035

TEL: (205) 665-2536

FAX: (205) 665-2545

Geographical Area Served: North America and Export

Products Produced or Sold: Crossties, Switch ties, Bridge timbers, Crossing Timbers

Treatment Processes Used: Creosote, Borate, Copper Naphthenate

Product Transportation Modes Available: Rail - NS; Truck

Contact: Brian Ingersoll, Plant Manager
Eddie Horton, Sales Manager
(304) 488-9936

RUSSELLVILLE, AR

4260 South Arkansas Avenue

Russellville, AR 72802

TEL: (479) 968-5085

FAX: (479) 968-4636

Geographical Area Served: North America & Export

Products Produced or Sold: Crossties, Switch ties, Bridge timbers, Crossing timbers

Treatment Processes Used: Creosote, 2-Step Borate

Special Services Offered: Panel Bridges, Prefabricated Crossings, Pre-Plating

Contact: Bryan Frazee, Plant Manager
Justin Runyon, Sales Manager (520) 631-4283

WINSLOW, IN

3818 S. County Road 50 E

Winslow, IN 47598

TEL: (812) 789-5331

FAX: (812) 789-5335

Geographical Area Served: North America and Export

Products Produced or Sold: Crossties, Switch ties, Tie plugs

Treatment Processes Used: Creosote, 2-step Borate

Production Transportation Modes Available: Truck; Rail - Norfolk Southern, CN

Special Services Offered: Pre-Plating

Contact: Steve Basham, Plant Manager
Craig Cook, Sales Manater (218) 282-3002

STELLA-JONES INC. (CORPORATE HEADQUARTERS IN CANADA)

3100 de la Côte-Vertu Boulevard, Suite 300

Saint-Laurent, Québec, Canada H4R 2J8

TEL: (514) 934-8666

FAX: (514) 934-5327

EMAIL: cestrella@stella-jones.com

Contact: Eric Vachon, President

Plants or Other Locations - Canada

CARSELAND, AB

P.O. Box 99

Carseland, AB Canada T0J 0M0

TEL: (403) 934-4600

Geographical Area Served: North America

Products Produced or Sold: Grade Crossties, Industrial ties, Switch ties, Poles & Piling

Treatment Processes Used: Creosote, Penta, ACQ, CCA

Product Transportation Modes Available: Truck, Rail - Canadian National, Canadian Pacific

Contact: Ian Jones, Senior Vice-President
Robert Stewart, Director of Sales,
Western Region

PRODUCER MEMBERS

STELLA-JONES INC. (CONTINUED)

DELSON, QC

41 Rodier Street
Delson, QC Canada J5B 2H8
TEL: (450) 632-2011; (800) 387-5027 x 1152

Geographical Area Served: North America

Products Produced or Sold: Grade Crossties, Industrial ties, Switch ties, Poles & Piling

Treatment Processes Used: Creosote, ACQ, CCA

Product Transportation Modes Available: Truck, Rail - Canadian National, Canadian Pacific

Contact: Eric Marleau, Plant Manager (x 1153)
Cynthia Thibeault, Sales Manager/International
(450) 632-2011 x1147

GALLOWAY, BC

7400 Galloway Mill Rd.
Galloway, BC Canada V0B 1T2
TEL: (250) 429-3493; FAX: (250) 429-3931

Geographical Area Served: North America

Products Produced or Sold: Poles

Treatment Processes Used: Penta

Product Transportation Modes Available: Truck, Rail (CPR)

Contact: Ian Jones, Senior Vice-President
Darrin Vigue, Plant Manager

GATINEAU, QC

426, chemin de Montreal Est
Gatineau, QC Canada J8M 1V6
TEL: (819) 986-8998

Geographical Area Served: North America

Products Produced or Sold: Poles & Piling

Treatment Processes Used: CCA, CCA-PEG, CCA-PA

Product Transportation Modes Available: Truck

Contact: Eric Savignac, Director of Operations
Marc Lauzon, Plant Manager

GUELPH, ON

7818 Wellington Road 22
P.O. Box 154 RR #5
Guelph, ON Canada N1H 6J2
TEL: (519) 822-3901

Geographical Area Served: North America

Products Produced or Sold: Poles

Treatment Processes Used: CCA

Product Transportation Modes Available: Truck, Rail

Contact: Hanen Abd, Plant Manager
Kyle Conley, Sr. Account Specialist

KIRKLAND LAKE, ON

100 Highway 672 (Esler Park Rd.)
Kirkland Lake, ON Canada P2N 3L2
TEL: (705) 567-2113

Geographical Area Served: North America

Products Produced or Sold: Poles

Treatment Processes Used: CCA

Product Transportation Modes Available: Truck, Rail

Contact: Andy McCallum, Plant Manager
Alex Hall-Petty, Sales Manager

NEW WESTMINSTER, BC

25 Braid Street
New Westminister, BC Canada V3L 3P2
TEL: (604) 521-4385

Geographical Area Served: North America

Products Produced or Sold: Grade Crossties, Industrial ties, Switch ties, Piling and Industrial Poles

Treatment Processes Used: Creosote, CCA

Product Transportation Modes Available: Rail - BNSF, Canadian National, Canadian Pacific; Truck

Contact: Bradley Baigent, Director of Operations
Ian Jones, Senior Vice-President
Desmond Fitzgerald, Sales Manager

PRODUCER MEMBERS

STELLA-JONES INC. (CONTINUED)

PRINCE GEORGE, BC

7177 Pacific Street
Prince George, BC Canada V2N 5S4
TEL: (250) 561-1161

Contact: Ian Jones, Senior Vice-President

Geographical Area Served: North America

Products Produced or Sold: Grade Crossties, Industrial ties, Switch ties, Poles & Piling

Treatment Processes Used: Creosote, Penta, CCA-ET, CCA

Product Transportation Modes Available: Truck, Rail – Canadian National

TRURO, NS

278 Park Street
Truro, NS Canada B2N 5C1
TEL: (902) 893-9456

Contact: Gordon Murray, Vice President-Envro,
Tech & GM
Christopher Thompson, Plant Manager
Stephen Cook, Sales Manager/Atlantic

Geographical Area Served: North America

Products Produced or Sold: Poles & Piling

Treatment Processes Used: CCA

Product Transportation Modes Available: Truck, Rail - Canadian National

SUMITOMO CANADA LIMITED

380 St. Antoine Street West, Suite 3131
Montreal, QC Canada H2Y 3X7
TEL: (514) 878-0104
FAX: (514) 871-0224
EMAIL: denis.schaeffer@sumitomocorp.com

Physical Location: Same as mailing address

Contact: Denis Schaeffer, Vice President & General Mngr.

SUPERIOR TIE & TIMBER

P. O. Box 847
Vivian, Louisiana 71082
TEL: (318) 375-4956
FAX: (318) 375-5473

Physical Location: 14800 Highway 1, Vivian, LA 71082

Contact: Steven Barr, Plant Manager

Geographical Area Served: South

Products Produced or Sold: Crossties; switch ties; bridge timbers

Treatment Processes Used: Lowery; Rueping

Product Transportation Modes Available: Rail; Truck; Barge

TIE & TIMBER TECHNOLOGIES, LLC.

361 Cooper River Drive
Mount Pleasant, South Carolina 29464
TEL: (404) 966-0454 (Gene Martini)
TEL: (770) 815-6976 (Marjorie Singley-Hall)
EMAIL: gmartini@t3wood.biz; msingleyhall@t3wood.biz

Physical Location: Same as mailing

Contact: Marjorie Singley-Hall, Chief Compliance Officer

Geographical Area Served: South Carolina and adjacent states

Products Produced or Sold: Railway Ties / Pallet cants

Special Equipment or Manufacturing Services Offered: Carriage Mill for producing bridge ties, switch ties, construction mats

Product Transportation Modes Available: Truck/Rail

Rail Loading Points: CSX and RJ Corman rail spurs adjacent to plant site

TRANS CANADA FOREST PRODUCTS

820 rue Saint Jean Baptiste
Henryville, QC JOJ 1E0 Canada

Physical Location: Same as mailing

Contact: Raymond Sheepwash, President

PRODUCER MEMBERS

TRANS CANADA FOREST PRODUCTS *(CONTINUED)*

TEL: (450) 515-7623

EMAIL: rsheepwash@pftranscan.com

Website: www.pftranscan.com

Geographical Area Served: United States, Canada and Mexico

Products Produced or Sold: Bridge timbers, crossing planks, poles and pilings, crane mats and access mats

Product Transportation Modes Available: Truck, Rail, Ocean

Special Services Offered: Bridge timber fabrication including dapping, tapering, end plating & pre-plating, transloading

Rail Loading and Unloading Points: Saint-Jean-sur-Richelieu (Canada)

WARD TIMBER, LTD.

P.O. Box 360

Linden, Texas 75563

TEL: (903) 756-7700

FAX: (903) 756-8313

EMAIL: jerry.hendrix@wardtimber.com

Website: www.wardtimber.com

Geographical Area Served: Northeast Texas; Western Louisiana; Southern Arkansas; Southeast Missouri

Products Produced or Sold: Crossties; switch ties, cants, hardwood

Treatment Processes Used: Copper Naphthenate

Product Transportation Modes Available: Truck

Physical Location: 1101 US 59, Linden, TX 75563

Contact: Jerry Hendrix, Mill Manager

WHEELER LUMBER, LLC

P.O. Box 8

Whitewood, South Dakota 57793

TEL: (605) 269-2215

CELLS: (605) 645-8694; (605) 645-8801

EMAIL: dkoch@wheeler1892.com;

jparrett@wheeler1892.com

Geographical Area Served: United States and Canada

Products Produced or Sold: QNAP bridge timbers, crossing timbers, & piling

Treatment Processes Used: Copper Naphthenate (QNAP)

Special Services Offered: Bridge timber fabrication including dapping, tapering, end plating, & pre-plating

Rail Loading Points: Whitewood, SD

Physical Location: 12127 Whitewood Svc Rd.,
Whitewood, SD 57793

Contact: Dave Koch, General Manager-Timber Div.
Jeff Parrett, Senior Business Dev. Manager

WILLIAM G. MOORE & SON, INC. OF DELAWARE

P. O. Box 6309

Freehold, New Jersey 07728

TEL: (732) 303-6049 • FAX: (732) 303-6075

EMAIL: sales@moorethanwood.com

Geographical Area Served: United States & International

Products Produced or Sold: Oak; Southern Pine; Douglas Fir; EKKI/Azobe; Mora; Angelim Pedra & Vermelho and Greenheart. All domestic species and all tropical hardwoods; Crossties & Switch Ties; Bridge timbers; Pre-fabricated bridge sections; Car decking & blocking; Turnouts; Crossovers; Panelized track sections; Frogs; Special work sections; Crane mats; Cribbing; Poles & Piling; Rail & OTM; Tie plates & hardware; Composite ties

Treatment Processes Used: All treatments available

Contracting or Consulting Services Offered: Millwork; Tapering; Dapping; Pre-plating, etc.

Website: www.moorethanwood.com

Production Transportation Modes Available: Rail, Ocean, Truck

Special Equipment or Manufacturing Services Offered: Unique fabrication of specialty including daps, dowels, etc., WBE/DBE certified

Physical Location: 218 Schanck Rd., Freehold, NJ 07728

Contact: Audrey Troise, President
Shelly Zisko, Vice President
Julie Mosher, Vice President-Sales

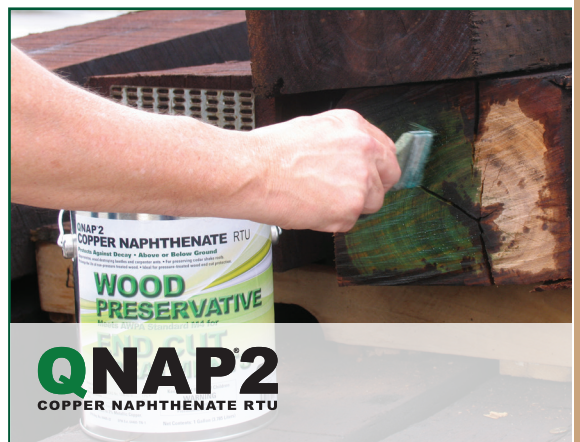
INNOVATIONS IN SAFETY & SUSTAINABILITY

WHY RAILROADS ARE SWITCHING TO **QNAP** COPPER NAPHTHENATE FOR CROSSTIES.

Like creosote, QNAP is a heavy duty oil-borne preservative, which means it can be used to treat hard refractory species like white oak and Douglas fir. QNAP is American Wood Protection Association (AWPA) standardized for use on ties, timbers and poles.

QNAP also reduces bleeding and drippage. QNAP-treated ties have quickly become the #1 choice of Class I railroads for their bridges because it virtually eliminates the dripping from bridge ties onto roads, vehicles and waterways. With cleaner handling characteristics, QNAP ties are clean and easier to handle in the field. You can also add the protection of Cellu-Treat borate to your bridge ties using our BTX system.

Additionally, ready-to-use QNAP 2 is available to field treat end-cuts, daps and drill holes, eliminating treatment gaps.



NISUS
Better science for a better world.

JEFF THOMAS

Eastern Region Manager

865-323-4821 • jefft@niscorp.com

REMEMBER TO ALWAYS READ, UNDERSTAND AND COMPLY WITH THE LABEL | 800.264.0870 | WWW.NISUSCORP.COM | #CT-AM2022
QNAP AND NISUS ARE REGISTERED TRADEMARKS OF NISUS CORPORATION. ©2022 NISUS CORPORATION

INNOVATIONS IN SAFETY & SUSTAINABILITY

WHY RAILROADS ARE SWITCHING TO QNAP COPPER NAPHTHENATE FOR CROSSTIES.

Like creosote, QNAP is a heavy duty oil-borne preservative, which means it can be used to treat hard refractory species like white oak and Douglas fir. QNAP is American Wood Protection Association (AWPA) standardized for use on ties, timbers and poles.

QNAP also reduces bleeding and dripage. QNAP-treated ties have quickly become the #1 choice of Class I railroads for their bridges because it virtually eliminates the dripping from bridge ties onto roads, vehicles and waterways. With cleaner handling characteristics, QNAP ties are clean and easier to handle in the field. You can also add the protection of Cellu-Treat borate to your bridge ties using our BTX system.

Additionally, ready-to-use QNAP 2 is available to field treat end-cuts, daps and drill holes, eliminating treatment gaps.



JEFF THOMAS
Eastern Region Manager
865-323-4821 • jefft@niscorp.com

REMEMBER TO ALWAYS READ, UNDERSTAND AND COMPLY WITH THE LABEL | 800.264.0870 | WWW.NISUSCORP.COM | #CT-AM2022
QNAP AND NISUS ARE REGISTERED TRADEMARKS OF NISUS CORPORATION. ©2022 NISUS CORPORATION



QNAP2
COPPER NAPHTHENATE RTU

SUPPLIERS (PRESERVATIVE)

ARXADA

1200 Bluegrass Lakes Parkway
Alpharetta, Georgia 30004
TEL: (470) 504-1301

EMAIL: jay.hilsenbeck@arxada.com

Website: www.WolmanizedWood.com

Geographical Area Served: North America

Products Produced or Sold: Wood treating chemicals, including Chemonite® ACZA and DOT

Product Transportation Modes Available: Truck, Rail

Special Equipment or Manufacturing Services Offered: Engineering and Environmental Services

Physical Location: Same as mailing address

Contact: Jay Hilsenbeck, Global Product
Director & NA Mkt. Director

COOPERS CREEK CHEMICAL CORP.

884 River Road
Conshohocken, Pennsylvania 19428
TEL: (610) 828-0375
FAX: (610) 828-9720

EMAIL: amorris@cooperscreekchemical.co
smorris@cooperscreekchemical.com

Geographical Area Served: Domestic & International

Products Produced or Sold: Creosote various grades

Website: www.cooperscreekchemical.com

Product Transportation Modes Available: Rail; Drum; Bulk Tanker

Physical Location: Same as mailing address

Contact: Mark Morris, - ext. 125
Scott Morris, - ext. 117

ETIMINE USA, INC.

411 Hackensack Avenue, Suite 902
Hackensack, New Jersey 07601
TEL: (201) 462-1200 (New Jersey Office)
CELL: (973) 652-5139 (DM Schake); (203) 428-1673 (H Gani)
EMAIL: dschake@etimineusa.com; hgani@etimineusa.com

Geographical Area Served: North, Central and South America. Globally through parent company Eti Maden, Turkey and sales offices throughout Europe, Asia, Africa and Australia/New Zealand.

Products Produced or Sold: Eti Maden is the world leader in boron minerals and refined borates. Etimine USA offers borate preservatives used in treating wood and composites. Our EPA MG registered products include: Boric Acid, Etidot 67 (DOT) disodium octaborate tetrahydrate, Etibor 48 (borax pentahydrate, 5 mol) and borax decahydrate. Additional products include zinc borate, boron oxide, anhydrous borax, ulexite and colemanite mineral ores. We also hold PMRA registrations in Canada.

Website: www.etimineusa.com

Plant or Other Locations: Etimine USA borates are available in warehouses across the US, Wilmington DE, Savannah GA and Pasadena TX, by truck and rail. Please contact Donna Schake for more information.

Physical Location: Same as mailing address

Contact: Donna Schake, Sales &
Marketing Manager
Haluk Gani, President & CEO

KOPPERS INC.

436 Seventh Avenue
Pittsburgh, Pennsylvania 15219-1800
TEL: (412) 227-2658 • FAX: (412) 227-2262
EMAIL: RomigTL@koppers.com

Geographical Area Served: North America; Worldwide

Products Produced or Sold: Coal Tar Creosote (AWPA P1/P13); & Creosote solution (AWPA P2) for pressure applications; Coal Tar Creosote (AWPA P1/P13) for general applications; Creosote Petroleum Solution

Product Transportation Modes Available: Truck; Rail; Barge

Plant or Other Locations: (Inside U.S.) Chicago, IL; **(Outside U.S.)** Newcastle, Australia; Nyborg, Denmark

Physical Location: Same as mailing address

Contact: Tracy Romig, Manager
Marketing & Sales-Creosote
Carbon Materials & Chemicals

SUPPLIERS (PRESERVATIVE)

LONE STAR SPECIALTY PRODUCTS, LLC.

Corporate Headquarters

4200 East Skelly Drive, Suite 600, Tulsa, OK 74135
TEL: (918) 488-1339

Pittsburgh, PA Office

Contact: Jennie Rahimzadeh (724) 996-2597

EMAIL: luke@asphalt-fuelsupply.com ; jrahimzadeh@lonestarspecialties.net

Geographical Area Served: North American, Central America, South America

Products Produced or Sold: AWPA Creosote P1, P2, P3, CPS, Petroleum oils

Product Transportation Modes Available: Rail; Truck, Packaged, totes, ISO containers

Website: www.lonestarspecialties.net

Physical Location: 6412 U.S. Highway 259,
Lone Star, TX 75668

Contact: Luke Galan, Manager of
Sales & Marketing
TEL: (918) 346-0535

NISUS CORPORATION

100 Nisus Drive

Rockford, Tennessee 37853

TEL: (865) 577-6119

FAX: (865) 577-5825

EMAIL: lbarrett@nisuscorp.com;

Kenl@nisuscorp.com;

jeffl@nisuscorp.com;

markm@nisuscorp.com;

jefft@nisuscorp.com

Geographical Area Served: USA and Global

Products Produced or Sold: QNAP Copper Naphthenate; Cellutreat DOT Liquid Borate; Cellutreat Powder DOT Borate and BTX Bridge Tie Extender System (allows for borate treatment of unseasoned bridge ties)

Product Transportation Modes Available: Rail, Tanker, Truck, LTL

Physical Location: Same as mailing address

Contact: Lee Barrett, President
Dr. Jeff Lloyd, Sr. Vice President,
Innovation & Sustainability
Dr. Mark Manning, Business
Development Mngr.
Jeff Thomas, Southern Regional
Sales Manager

RAIN CARBON CANADA INC.

725 Strathearne Ave., North

Hamilton, Ontario, Canada L8H 5L3

TEL: (905) 548-5532

FAX: (905) 544-4942

EMAIL: gord.gilmet@raincarbon.com

Geographical Area Served: North America

Products Produced or Sold: Various types of creosote for use as a wood preservative

Product Transportation Modes Available: Railcar, tanker truck, marine vessel

Rail Loading Points: Hamilton, Ontario

Website: www.raincarbon.com

Physical Location: Same as mailing address

Contact: Gord Gilmet, Technical Manager

RIO TINTO MINERALS (U.S. BORAX)

200 E. Randolph, Suite 7100

Chicago, Illinois 60601

TEL: (773) 270-6549

EMAIL: Frank.Wawrzos@riotinto.com,leo.jaime@riotinto.com

Geographical Area Served: Global distribution of Borate
wood preservatives

Products Produced or Sold: Tim-bor Industrial - a Borate wood preservative with EPA registration suitable for use as a preservative in the dual treatment of wooden crossties

Website: www.borax.com

Physical Location: Same as mailing address

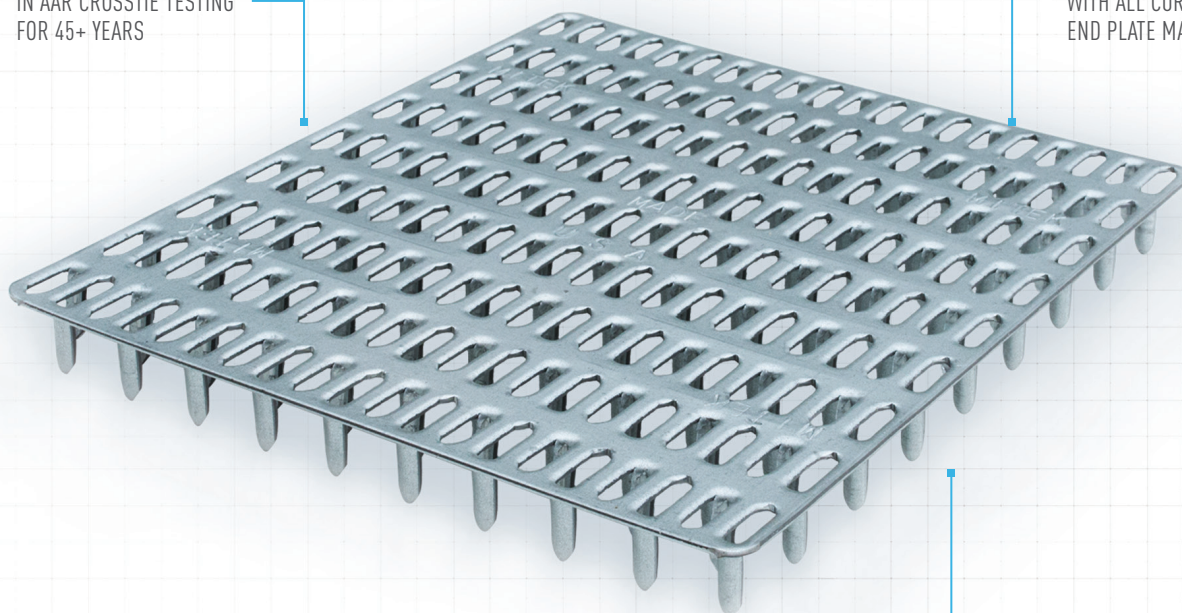
Contact: Frank Wawrzos,
Product Research and Innovation;
(312) 894-9146
Leo Jaime, Sales and Marketing;
(773) 441-3887

CHOOSE A TRACK RECORD THOUSANDS OF MILES LONG

MITEK® ANTI-SPLIT PLATES

INCLUDED
IN AAR CROSSTIE TESTING
FOR 45+ YEARS

WORKS
WITH ALL CURRENT
END PLATE MACHINES



MEETS OR EXCEEDS
RAILROAD SPECIFICATIONS

TRUST THE ONLY ANTI-SPLIT PLATES PROVEN TO PERFORM SINCE 1970.

MiTek's Anti-Split Plates are specifically designed for end grain applications, with patent features that ensure penetration at the end of the tie for maximum holding power. Extend the Life of Your Crossties.

Contact Vuk Milicevic: vmilicevic@mii.com / 314-973-3028

MiTek®

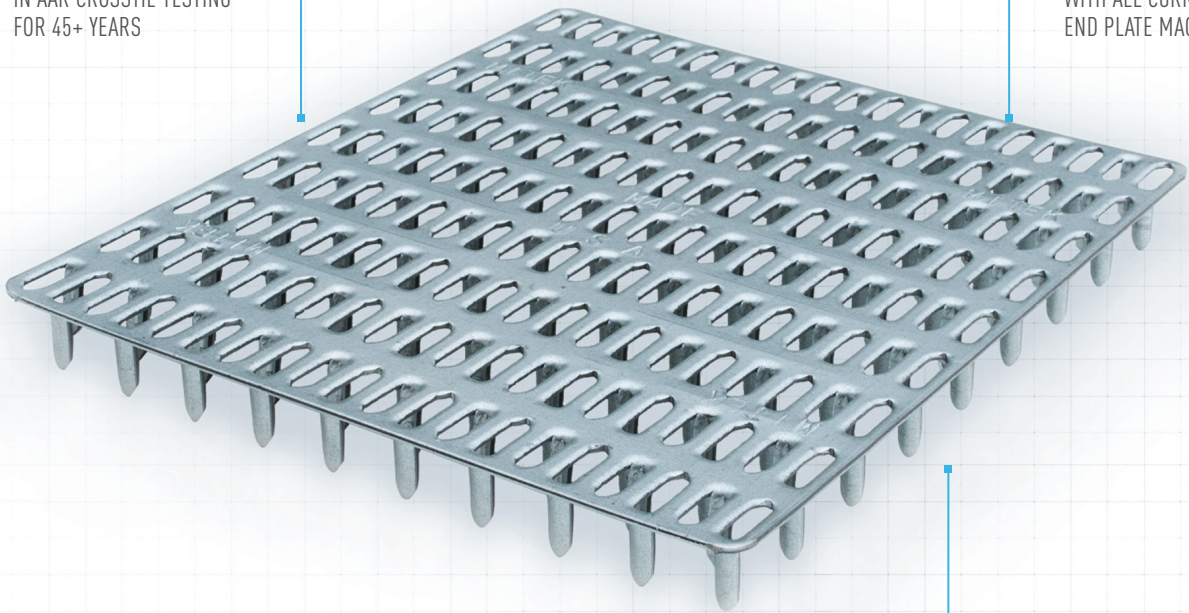
1-800-328-5934
MiTek-US.com

COPYRIGHT © 2019 MITEK INDUSTRIES, INC. ALL RIGHTS RESERVED

CHOOSE A TRACK RECORD THOUSANDS OF MILES LONG

MITEK® ANTI-SPLIT PLATES

INCLUDED
IN AAR CROSSTIE TESTING
FOR 45+ YEARS



WORKS
WITH ALL CURRENT
END PLATE MACHINES

MEETS OR EXCEEDS
RAILROAD SPECIFICATIONS

TRUST THE ONLY ANTI-SPLIT PLATES PROVEN TO PERFORM SINCE 1970.

MiTek's Anti-Split Plates are specifically designed for end grain applications, with patent features that ensure penetration at the end of the tie for maximum holding power. Extend the Life of Your Crossties.

Contact Vuk Milicevic: vmilicevic@mii.com / 314-973-3028

MiTek®

1-800-328-5934
MiTek-US.com

COPYRIGHT © 2019 MITEK INDUSTRIES, INC. ALL RIGHTS RESERVED

SUPPLIERS (NON-PRESERVATIVE)

A&K RAILROAD MATERIALS, INC

P.O. Box 30076
Salt Lake City, Utah 84130
TEL: (801) 974-5484
FAX: (800) 367-4246
EMAIL: sales@akrailroad.com
Website: www.akrailroad.com

Physical Location: 1505 S. Redwood Rd.,
Salt Lake City, UT 84104
Contact: Kellen Desmond, President

Geographical Area Served: North and South America

Products Produced or Sold: New and relay rail, tie plates, ties; packaged, preplated and panelized turnouts; bonded insulated joints, fasteners, continuous welded rail (CWR)

Production Transportation Modes Available: Truck, railcar and barge

Contracting or Consulting Services Offered: Change out and abandonment Rail/OTM recovery, CWR rail trains

Plant or Other Locations: Dolomite, AL; Mira Loma, CA; Stockton, CA; Hamden, CT; Granite City, IL; Gary, IN; Hobart, IN; Kansas City, KS; Toledo, OH; McMurray, PA; Eagle Lake TX; Spring, TX (International Office); Salt Lake City, UT; Tacoma, WA

AMERICAN WOOD TECHNOLOGY

1039 Brockton Road, Bldg. 3
Jefferson, Georgia 30549
TEL: (877) 785-0274 or (404) 520-0239
EMAIL: claus@staalner.com

Physical Location: Same as mailing address
Contact: Claus Staalner, President

Geographical Area Served: North America

Special Equipment or Manufacturing Services Offered: We offer complete Turn-Key treating plants for Creosote plants for Ties and Poles as well as oil based chemicals. We offer complete plant PLC/NC controls together with our complete plants, but can also supply custom built control systems with or without motor control cabinets as a stand-alone item for existing plants. We have Hydro-Thermo treatment plants available, as well as Vacuum drying process equipment. We offer custom built hydraulic doors and rail bridges for certain rail bridges. In addition we are also offering a complete line of Dip tanks from very small and manually operated to completely automatic dip system for borate and other chemical treatments. We offer a complete line of automation and handling equipment like transfer bridges, roller conveyors chains, feeders and all handling needed for a treating plant of any kind.

ARKANSAS STEEL ASSOCIATES

2803 Van Dyke Road
Newport, Arkansas 72112
TEL: (870) 523-3693
FAX: (870) 523-4619
EMAIL: jacot@arkansassteel.com

Physical Location: Same as mailing address
Contact: Shota Kajikawa, President & CEO
Richard Anderson, Vice President
Sales & Purchasing
Jeff Jacot, Sales Manager

ASPHALT AND FUEL SUPPLY, LLC.

4200 East Skelly Drive, Suite 600
Tulsa, Oklahoma 74135-3210
TEL: (918) 488-1339
FAX: (918) 523-7089
EMAIL: john@afs-tulsa.com; matt@afs-tulsa.com; Cell: (918) 346-0535;
luke@afs-tulsa.com

Physical Location: Same as mailing address
Contact: John Reaves, Managing Member
Luke Galan, Manager of Sales & Marketing
Matt Roberts, Vice President

Website: www.asphalt-fuelsupply.com

Geographical Area Served: Continental United States

Products Produced or Sold: P4, Petroleum oil for blending with creosote; Custom blended refined petroleum products

Production Transportation Modes Available: Barge, Rail and Truck

SUPPLIERS (NON-PRESERVATIVE)

BREWCO INC.

P.O. Box 150
Central City, Kentucky 42330
TEL: (800) 237-6880; (270) 754-5847
FAX: (270) 754-9249
EMAIL: mgoldston@brewco.com

Website: www.brewcoinc.com

Geographical Area Served: Worldwide

Products Produced or Sold: Brewco Inc., founded in 1991, has become an industry leader in custom manufacturing. We are fully insured for on-site installation. We manufacture unscramblers, end trim saws, incisors and replacement heads, end platers with and without squeeze, both a german stacker and tram stacker, as well as dip tanks. Most importantly, we will allow hodbacks for guaranteed throughput.

Product Transportation Modes Available: Truckline

Contracting or Consulting Services: Mill lay-out and design

Special Equipment or Manufacturing Services Offered: Stackers, Tie Platers (Standard Length and Switchtie Length), both with our without End Squeezeability

Physical Location: 607 Front St., Central City, KY 42330

Contact: Mike Goldston, President (Cell) 270-543-5444

BSP MANUFACTURING

6700 Wolfe
Lac-Megantic, QC Canada G6B 2S3
TEL: (819) 583-3068 CELL: (819) 583-7303
FAX: (819) 583-0896
EMAIL: infobsp@bellnet.ca

Website: www.bsptieplugs.com

Geographical Area Served: United States and Canada

Products Produced or Sold: Cedar Tie Plugs - 5/8 x 5/8 x 4 1/2" head 11/16; 9/16 x 9/16 x 4 1/2" No head

Product Transportation Modes Available: Railroad and road

Rail Loading Points: Lac-Megantic, QC

Physical Location: Same as mailing address

Contact: Claude St-Pierre, President

COOPER MACHINE COMPANY

PO Box 550
Wadley, GA 30477
TEL: (478) 252-5885
FAX: (478) 252-1866
EMAIL: Info@coopermachine.com
Website: www.coopermachine.com

Geographical Area Served: Worldwide

Special Equipment or Manufacturing Services: Scraggs, Merchandising Systems, Stacking Systems, Gang Saws

Rail Loading Points: Lac-Megantic, QC

Physical Location: 50 W Smith St., Wadley, GA

Contact: Frances Cooper, CEO
Marshall Norris, Sales Associate

EAGLE METAL PRODUCTS

12300 Ford Rd., Suite 110
Dallas, Texas 75234
TEL: (800) 521-3245
FAX: (972) 888-9966
EMAIL: salesteam@eaglemetal.com

Geographical Area Served: Worldwide

Products Produced or Sold: Anti-Split Plates for Crossties and Switch Ties

Website: www.eaglemetal.com

Product Transportation Modes Available: Truck

Physical Location: 11511 Luna Rd., Suite 100

Farmers Branch, TX 75234

Contact: Tracy Roe, Sales Manager

SUPPLIERS (NON-PRESERVATIVE)

EMBRY AUTOMATION & CONTROLS

PO Box 2149
Evansville, IN 47728
EMAIL: rembry@embryteam.com or sales@embryteam.com
TEL: (812) 475-8909
FAX: (812) 475-9709

Physical Location: 900 Maxwell Ave.,
Evansville, IN 47711
Contact: Rick Embry, President

Geographical Area Served: United States, Canada & Mexico

Contracting or Consulting Services: From concept through implementations, Embry Automation & Controls provide custom Automated Integrated PLC/HMI Solutions for the ever-changing needs of the industry. With a concentrated focus on Customer Service and Superior Quality, Embry Automation & Controls specializes in providing cutting edge automated solutions for new and existing equipment, control modifications to existing systems, and electrical repair services. With 24-hour field service and remote access capabilities, Embry Automation & Controls can deliver fast and efficient troubleshooting and improvements anytime day or night.

Website: www.embryenterprises.com

ENCORE RAIL SYSTEMS INC.

2300 West Midway Boulevard
Broomfield, Colorado 80020
TEL: (866) 712-7622
EMAIL: services@encorers.com

Physical Location: Same as mailing address

Contact: Charlie Briggs, Regional Sales Manager

Geographical Area Served: U.S., Canada and Mexico

Website: www.encorers.com

Products Produced or Sold: Wood and concrete tie repair, track inspection, safety and rules training

Contracting or Consulting Services: Specialized application equipment & products for wood and concrete tie repair

Special Equipment or Manufacturing Services: Polyurethane foam plugging compounds, polyurea and epoxy concrete repair and coating products. Application equipment for all products.

GENICS INC.

27717 Acheson Road
Acheson, Alberta Canada T7X 6B1
TEL: (780) 962-1000
EMAIL: rodney.hardison@genicsinc.com

Physical Location: Same as mailing address

Contact: Rodney Hardison, Director of Sales
(Monroe, GA)

Geographical Area Served: International with research facilities located in Hawaii, Mississippi and Louisiana

Products Produced or Sold: Safe & environmentally friendly wood treatment products that extend the service life of wood products from decay, insects, fire, and woodpeckers

HTP ENERGY LLC

268 Industrial Boulevard
Bainbridge, Georgia 39817
Tel: (229) 400-0334
EMAIL: Leon.Glenn@htpenergy.com

Physical Location: Same as mailing address

Contact: Leon Glenn, Director Of Southeast Operations

Geographical Area Served: North America

SUPPLIERS (NON-PRESERVATIVE)

INDUSTRIAL POWER

635 Sweeden Road
Russellville, Arkansas 72802
TEL: (479) 498-2001
FAX: (479) 498-2197
EMAIL: austin@industrialpower.net; eric@industrialpowerinc.net

Geographical Area Served: US and Canada

Products Produced or Sold: Crosstie equipment

Website: www.industrialpowerinc.net

Product Transportation Modes Available at this Site: All standard modes of transportation

Special Equipment of Manufacturing Services Offered: Crosstie equipment and equipment manufacturing

Physical Location: Same as mailing address

Contact: Michael Gray, Owner
Austin Foster, Accounting Manager
Eric Jones, Design Department Director

KOP-COAT PROTECTION SERVICES **Physical Location: Same as mailing address**

3040 William Pitt Way
Pittsburgh, Pennsylvania 15238
TEL: (412) 227-2426
EMAIL: siellimo@kop-coat.com

Geographical Area Served: International

Products Produced or Sold: Treating Chemicals

Contact: Santino Iellimo, Director of
Purchasing & Operations

L.B. FOSTER CO.

415 Holiday Drive
Pittsburgh, Pennsylvania 15220
TEL: (403) 265-3371
FAX: (403) 265-3969
EMAIL: bzimmer@lbfoster.com

Geographical Area Served: North America and International

Products Produced or Sold: Suppliers of new and relay rail, OTM, special trackwork, insulated joints, direct fixation rail fasteners and portable wood tie pre-plating.

Website: www.lbfoster.com

Physical Location: Same as mailing address

Contact: Bill Zimmer, Class 1 Sales Director

LEWIS BOLT & NUT COMPANY

600 Twelve Oaks Center Dr., Suite 638
Wayzata, Minnesota 55391
TEL: (952) 449-9630 • FAX: (952) 449-9607
EMAIL: dbarry@lewisbolt.com, george@lewisbolt.com;
zhansen@lewisbolt.com

Geographical Area Served: North America, Mexico and Canada

Special Equipment or Manufacturing Services Offered: Manufacturer of Fasteners for the Rail Industry since 1927

Products Produced or Sold: At our facilities in La Junta, CO, Lewis Bolt produces a variety of Screw Spikes, including our latest Evergrip G2® and Permagrip Spikes. Other items produced are the Recessed Head Timber Screws and Drive Spikes for grade crossings. LBN produces a variety of hardware for rail bridge construction such as the Sealrite Hook Bolt and the innovative & patented Quick-Set® Hook Bolt System. Lastly, LBN produces Drive-On Rail Anchors for a variety of sizes of rail including our latest patented Viper-1® Rail Anchors.

Product Transportation Modes Available at this Site: LTL, OTR as well as rail access

Plant or Other Locations: 30105 Sixth Ave., La Junta, CO 81050 (All Manufacturing is done at this location)

Website: www.lewisbolt.com

Physical Location: Same as mailing address

Contact: George Apostolou, VP, Sales
(503) 410.1278
Zach Hansen, AVP Sales (612) 834-3359
Tami Pollock, Inside Sales (800) 328-3480

SUPPLIERS (NON-PRESERVATIVE)

MENARDS RAILROAD MATERIALS

12050 Homestead Rd.
Houston, Texas 77050
TEL: (713) 898-5661
FAX: (832) 550-2610
EMAIL: shea@menardsrail.com

Physical Location: Same as Mailing

Contact: Manny Menard, President

Products Produced or Sold: Menards Railroad Materials is a 2nd generation company founded to supply a full range of track materials and tools to the railroad industry. We have grown and thrive by getting your order right and delivering on schedule. These two attributes form the backbone of our commitment to excellent customer service.

Contracting or Consulting Services: We buy both relay and scrap railroad steel. Menards Railroad Material can purchase and remove railroad track materials including Rail, OTM, Ties and Ballast. We can also remove, sort, inventory and redistribute your track materials.

Website: www.menardsrail.com

MITEK

16023 Swingley Ridge Rd.
Chesterfield, Missouri 63017
CELL: (314) 973-3028 • TEL: (800) 325-8075 • EMAIL: vmilicevic@mii.com

Physical Location: Same as mailing address

Contact: Vuk Milicevic Sales Manager - Railroad Products

Geographical Area Served: Worldwide

Products Produced or Sold: Anti-Split Plates for Crossties, Switch Ties and Special Sizes for Bridge Timbers and Crossing Timbers

Website: www.mitek-us.com

Special Equipment or Manufacturing Services: Automated End Plating Press Equipment

OMEGA INDUSTRIES

7304 NE St. Johns Road
Vancouver, Washington 98665
TEL: (360) 694-3221 • FAX: (360) 694-3882
EMAIL: jimmy@omega-industries.com

Physical Location: Same as mailing address

Contact: Jimmy Drakos, National Accounts Manager
Isidoros Garifalakis, CEO

PANDROL NORTH AMERICA

611 Winchester Road
Memphis, Tennessee 38116
TEL: (856) 467-3227 or (800) 221-CLIP
FAX: (856) 467-2994
EMAIL: Jim.Martin@pandrol.com

**Physical Location: 501 Sharptown Rd.,
Bridgeport, NJ 08014**

Contact: Breen Reardon, President & CEO
John Tabeling, VP & General Manager
F. Bob Coats, VP of R&D
Jim Martin, VP of Sales & Marketing
Allen Goff, Senior Director of Sales
Luke Reardon, Business

Geographical Area Served: United States

Website: www.pandrolusa.com

Products Produced or Sold: Pandrol eClip, FASTCLIP, SAFELOK I, Development Mngr. SAFELOK III, Double Shoulder Rolled Plates, Pandrol Rolled Plates, VICTOR Plates, Screw Spikes, Under Tie Pads (UTP), Tie Insulating Assemblies; Joint Fastening Assemblies; Aluminothermic Welding Packages (ATW), Tools and Equipment (EQC), and other fastening components and assemblies.

Product Transportation Modes Available: Truck; Rail

Plant or Other Locations: Houston, TX (Jim Martin); Omaha, NE (Allen L. Goff) and Little Rock, AR (Luke Reardon)

SUPPLIERS (NON-PRESERVATIVE)

PROGRESS RAIL, A CATERPILLAR CO. **Physical Location: Same as mailing address**

1600 Progress Drive
Albertville, Alabama 35950
TEL: (800) 332-2457
EMAIL: info@progressrail.com

Contact: Jose R. Mediavilla, Director
Technical Services
Jeff Harris, Director Class 1 Sales
Patrick Ryan

Geographical Area Served: North America and International Markets

Products Produced or Sold: Rail anchors, resilient fasteners, concrete tie fastening/insulating systems, direct fixation fastening systems, embedded systems, Ballast and Ballast Mats, track tools

Website: www.progressrail.com

Product Transportation Modes Available: Truck and rail

Plant or Other Locations: Manufacturing facility: Atchison KS, Transit Division: Mattituck NY, International Office: Munich Germany

RAILWAY ENGINEERING-MAINTENANCE SUPPLIERS ASSOCIATION

410 First Street SE, Suite 200
Washington, DC 20003
TEL: (202) 715-2921
FAX: (202) 204-5753
EMAIL: info@remsa.org

Contact: Urszula Soucie, President

Products Produced or Sold: REMSA is a trade association representing companies and individuals who manufacture or sell products, services and equipment which are sold to the railroad industry. REMSA also sponsors the largest exhibit of maintenance-of-way equipment, products and services in the United States. REMSA members exhibit rail and track products, track maintenance equipment and services, safety devices and software that enables the railroad industry to work smarter and more efficiently.

Website: www.remsa.org

TANK FAB INC.

P.O. Box 680
Rocky Point, North Carolina 28457-0680
TEL: (910) 675-8999
FAX: (910) 675-8585
EMAIL: jlippincott@tankfab.com; kpeden@tankfab.com

**Physical Location: 8787 US Hwy. 117 South
Rocky Point, NC 28457-6001**

Contact: Thomas Lippincott, President
Kenny Peden - Sales

Geographical Area Served: North America; South America; Caribbean

Produced or Sold: Need to replace your old equipment? Need to increase output production? Need a way to efficiently handle your wood products before, during, and after treatment? Tank Fab has been designing & manufacturing wood treatment equipment since 1974. We provide all the storage tanks, valves, piping, pumps, PLC/computer automation, and material handling systems that make your treating cylinder work! Oh? And did we mention we design and manufacture, and install everything listed above? We're more than just autoclaves! See our website for further details.

Treatment Processes Used at This Facility: Oil borne and/or water borne preservatives

Website: www.tankfab.com

Product Transportation Modes Available: Truck, Rail, Ship

Contracting or Consulting Services Offered: Treating Plant Equipment layout & design, including tank sizing, pump selection, automation, and material handling. Existing treating cylinder inspections, repairs and alterations.

Product Transportation Modes Available at this Site: All standard modes of transportation

Rail Loading Points: Wilmington, NC

TAYLOR MACHINE WORKS, INC.

3690 North Church Avenue
Louisville, Mississippi 39339
TEL: (662) 773-3421
EMAIL: contact_sales@taylorbigred.com

Physical Location: Same as mailing address

Contact: Hal Nowell, Director of Sales
Kay Reynolds, Public Relations
& Mkt. Specialist

SUPPLIERS (NON-PRESERVATIVE)

TAYLOR MACHINE WORKS, INC. (CONTINUED)

Geographical Area Served: Worldwide

Website: www.taylorforklifts.com

Products Produced or Sold: A complete line of material Handling equipment for the rail tie industry. These models include heavy duty lift trucks with capacities ranging from 4,000 to 36,000 lbs. at 24-inch Load Centers and 30,000 to 40,000 lb. capacity models at 48-inch Load Centers; We also offer 4WD Wheel Loaders from 23,000 lb (FTTL) to 45,000 lb (FTTL) and a complete line of Rail Car movers. Our complete line of material handling equipment (Lift Trucks, Wheel Loaders, and Rail Car Movers) are purpose built to handle all loading requirements.

Special Equipment or Manufacturing Services Offered: Full line of new purpose built material handling equipment as well as full remanufacturing and major component rebuild services.

T-RAIL PRODUCTS

108, 18663 - 52nd Avenue

Surrey, British Columbia Canada V3S 8E5

TEL: (778) 574-3500 • FAX: (778) 574-5500

EMAIL: Sales@t-railproducts.com; Melindas@t-railproducts.com

Geographical Area Served: Canada, Alaska

Products Produced or Sold: Track Materials & Services, New & Used Rail, OTM, Ties, Track Work, Pre-Plating, Track Panels, Assembly, Warehousing, Transloading

Website: www.t-railproducts.com

Product Transportation Modes Available at this Site: All modes: Rail, Truck, Container, LTL, Vessel, etc.

Special Equipment or Manufacturing Services: Pre-plating, Transloading, Car Cleaning, Welding, Track Panels, Panelization, Sorting, Tie Plugging, Warehousing, Storage, Project Management, Material Pick Up, Handling, Grading, UT Testing

Plant or Other Locations: T-Rail Products Inc., 500 Jarvis Avenue, Winnipeg, MB Canada R2W 3B1

Rail Loading Points: CN, CP, BNSF, UP

Physical Location: Same as mailing address

Contact: Lisa Tunningley, President
Melinda Schmiegel, Client
Service Manager

WILLAMETTE VALLEY COMPANY

990 Owen Loop N.

Eugene, Oregon 97402

TEL: (541) 484-9621 • FAX: (541) 284-2096

EMAIL: lee.nall@wilvaco.com

Geographical Area Served: Worldwide

Products Produced or Sold: Wood tie plugging non-foaming urethane / concrete tie repair urethane product

Website: www.wvcorailroad.com

Product Transportation Modes Available at this Site: All standard modes of transportation

Physical Location: Same as mailing address

Contact: Lee Nall, National Sales Manager

WOOD CARE SYSTEMS

P.O. Box 2160

Kirkland, Washington 98083

TEL: (425) 827-6000

FAX: (425) 822-5800

EMAIL: jim@ewoodcare.com

Geographical Area Served: North America

Products Produced or Sold: Bor8 Rods for remedial treatment or dual treatment of bridge timbers, crossing timbers, switch ties, and crossties. Excellent for the Boron source prior to preservative pressure treatment for dual treatments. Established 3rd party research proven effective. Please call for more information.

Contracting or Consulting Services: Treatment plant design and implementation, custom drill patterns for specific structures.

Website: www.Ewoodcare.com

Physical Location: 719 Kirkland Ave., Kirkland, WA 98033

Contact: Jim Renfroe, President (cell) 425-681-3031



Your most valuable supplier.

LONE STAR

ASPHALT & FUEL SUPPLY

CREOSOTE & SPECIALTY PETROLEUM OILS

Lone Star Specialties & Asphalt & Fuel Supply produce and supply AWPA creosote including P1, P2, P3, P4, and Creosote Petroleum Solution to customers across North America. We offer logistics services arranging delivery of our products directly to the customer's front door via tank truck and railcar. Our priority is always to become your most valuable supplier.

Corporate Headquarters

(918) 488-1339

Luke Galan | Luke@asphalt-fuelsupply.com
asphalt-fuelsupply.com | lonestarspecialties.net

VIANCE[®]
TREATEDWOOD.COM

DCOI ties are on the horizon...

**Long-Term Efficacy Combined
with Low Environmental Impact**

Contact customerservice@viance.net to learn more

UltraTie

CONTRACTOR MEMBERS

VIANCE[®]
TREATEDWOOD.COM

DCOI ties are on the horizon...

**Long-Term Efficacy Combined
with Low Environmental Impact**

Contact customerservice@viance.net to learn more



UltraTie

CONTRACTORS/CONSULTANTS

APPLIED TESTING

401 E. Fourth Street, Bldg. 12B
Bridgeport, Pennsylvania 19405
TEL: (610) 313-3227
FAX: (610) 313-9667
EMAIL: bgottschalk@appliedtesting.com

Contracting or Consulting Services:

TESTING LABORATORY

Rail tie testing and inspections - concrete / wood bridge ties - crossties; Track testing NDT

Rail Spike: Clips: Fasteners

Ballast testing

Independent Inspection and Auditing Services of wood ties

Website: www.appliedtesting.com

Physical Location: Same as mailing address

Contact: Bruce Gottschalk, Business Development Manager

ATLANTIC TRACK & TURNOUT

1200 Roosevelt Road, Suite 306
Glen Ellyn, Illinois 60137
TEL: (630) 480-9756 / (800) 323-6256
FAX: (800) 944-9906
EMAIL: robb@atlantictrack.com

Geographical Area Served: North & South America

Special Equipment or Manufacturing Services: Manufacturer of specialty track work to AREMA and Class 1 specifications. Distributor of new/relay rail, crossties and OTM Products Produced or Sold: Packaged or Paneled Turnouts. RBM/SMSG Frogs, Switch Points, Stock Rails, Guard Rails, plate packages to AREMA and Class 1 Specifications. Compromised and Transition Rails. Expansion Joints. Track Panels. Pre-Plated Ties. Two and three piece manganese and fabricated Bridge Joint designs. Tongue and Mate Switches. Diamond Crossings

Product Transportation Modes Available: Truck or Railcar

Plant or Other Locations: St. Clair, PA; Pittsburgh, PA; Glyn Ellyn, IL; Chicago Heights, IL; Richmond, IL; Memphis, TN; Atlanta, GA; Cloy, GA

Website: www.atlantictrack.com

Physical Location: Same as mailing address

Contact: Rob Beard, Regional Manager -
Railroad Division (West)

CR QUALITY SERVICES

PO Box 10684
Merrillville, IN 46411
TEL: (219) 381-9995
EMAIL: jedwardsjr@crqsinc.com;
jimmy.edwards3@crqsinc.com

Contracting or Consulting Services: CR Quality Services, Inc. (CRQS) offers source inspection services for a variety of track products including special trackwork, rail, castings, forgings, and treated wood products. CRQS is also 1 of 4 accredited auditing agencies authorized to conduct AAR M-1003 quality audits of certified companies on behalf of the Association of American Railroads.

Other available services include: quality system reviews & development, internal quality system auditing & improvement consulting, and training of personnel in quality systems. Expertise in AAR M-1003 & ISO 9001 quality standards.

Website: www.crqsinc.com

**Physical Location: No Physical Address
(Inspectors are located across US)**

Contact: Jim Edwards, Jr., Inspector/Auditor
(219) 381-9995
Jimmy Edwards, Inspector/Auditor
(219) 895-6624

CONTRACTORS/CONSULTANTS

DANELLA RAIL

PMB 426, Suite 50, 6671 W. Indiantown Rd.
Jupiter, Florida 33478
TEL: (561) 743-7373
FAX: (561) 743-1973
EMAIL: sbolte@danella.com

Geographical Area Served: North America

Products Produced or Sold: We have a large vehicle and equipment rental fleet, including all types of vehicles, Hi-Rail, Welding Trucks, Rotary Dumps, Crane Trucks, Grapple Trucks, Tractors, Aerial Equipment, etc.

Contracting or Consulting Services: All types of railroad construction services, directional drilling to signal and track construction.

Website: www.danella.com

Physical Location: Same as mailing address

Contact: Stephen Bolte, VP Business
Development North America

EHS SUPPORT, LLC.

4885 McKnight Rd. #188
Pittsburgh, Pennsylvania 15237
TEL: (251) 533-6949
EMAIL: amy.bauer@ehs-support.com

Website: www.ehs-support.com

Contracting or Consulting Services: EHS Support LLC (EHS Support) is a full-service environmental, health and safety consultancy headquartered in Pittsburgh, Pennsylvania with over 90 staff located throughout 26 states, as well as in Australia, the United Kingdom, Belgium, and South Africa. Our services to the wood treating industry include Environmental Site Assessments & Remediation, Environmental Permitting & Compliance, Groundwater Resource Evaluations & Modeling, Risk & Ecological Assessments, Mergers & Acquisitions Due Diligence, Operational Studies for Oil and Gas & Chemical sectors, Health and Safety, Investigation, Development and Planning, Sediment Assessment & Remediation, and Water Resources.

Plant or Other Locations: EHS Support has over 90 employees located throughout 26 states, as well as in Australia, the United Kingdom, Belgium, and South Africa. Our locations include Alabama, Arizona, California, Delaware, Florida, Georgia, Illinois, Kentucky, Michigan, New Hampshire, New Jersey, New York, North Carolina, Ohio, Oregon, Pennsylvania, South Carolina, Texas, Utah, Vermont, Virginia, West Virginia, and Wisconsin.

Physical Location: Daphne, Alabama

Contact: Amy Bauer

HERZOG

P. O. Box 518
St. Joseph, Missouri 64502
TEL: (816) 233-9002
EMAIL: jhansen@herzog.com

Geographical Area Served: U.S., Mexico and Canada

Contracting or Consulting Services: Since 1969, Herzog has been a leader in the construction, operations, and maintenance of rail infrastructure throughout North America for railroads and transit clients. Focused on safety, quality, and innovation, Herzog brings the latest specialized technology to our clients for MOW equipment, positive train control, survey/data management, and rail flaw detection.

Special Equipment or Manufacturing Services: Herzog offers a full suite of specialized MOW equipment to increase the speed of railroad maintenance with increased versatility and safety. Our fleet of 5,000+ specialized railcars and hi-rail equipment is entirely designed and built in-house for services ranging from ballast distribution, rail handling, tie unloading, ultrasonic rail testing, and right-of-way survey. The Multi-Purpose Machine® performs a variety of tasks including crosstie, OTM, and rail handling; ditching; vegetation cutting; snow removal; and PTC, signal, and communications infrastructure installation. Our self-mounting CarTopper® machine also provides crosstie and OTM handling while riding atop railcars. Additional MOW equipment leasing options include our GPS ballast trains, Automated Conveyor Train, rail trains, Rail Unloading Machine, Automated Tie Down CarSM, and the ProScan LiDAR Truck.

Website: www.herzog.com

Physical Location: 700 S. Riverside Road,
St. Joseph, MO 64507

Contact: James Hansen, Chief Commercial Officer

CONTRACTORS/CONSULTANTS

K.U. RESOURCES, INC.

22 South Linden Street
Duquesne, Pennsylvania 15110
TEL: (412) 469-9331
FAX: (412) 469-9336
EMAIL: dkerschner@kuresources.com

Physical Location: Same as mailing address
Contact: David R. Kerschner, Principal/CEO

Geographical Area Served: Nationwide, but predominantly east of the Mississippi River
Contracting or Consulting Services: Environmental management & compliance programs; soil/groundwater investigation and remediation; plant decommissioning/demolition
Website: www.kuresources.com

LEE INSPECTION & CONSULTING & SERVICES

3358 N. Ewing Lane
Joplin, Missouri 64801
TEL: (866) 327-1899
FAX: (866) 327-1901
EMAIL: lindsay@leeinspect.com

Physical Location: Same as mailing address
Contact: Jeffery Lee, President
Lindsay Lee, Vice President

Contracting or Consulting Services: Inspection and quality assurance of crossties, switch ties, cross arms, bridge timbers, wood distribution and transmission poles.

LORAM TECHNOLOGIES, INC.

111 Cooperative Way, Suite 400
Georgetown, Texas 78626
TEL: (512) 869-1542
FAX: (512) 863-0405
EMAIL: LTI@loram.com

Physical Location: Same as mailing address
Contact: Nate Bachman, VP of Sales & Business Development

Geographical Area Served: Worldwide

Products Produced or Sold: Loram Technologies is working on the latest innovations in inspection services, ballast technologies, friction management, and infrastructure monitoring. Aurora® has set the standard for tie inspection, scanning the surface of wood ties and assigning grades. Aurora Xi™ takes inspections even further, using backscatter x-ray technology to look inside wood ties. Our tie marking solution utilizes data from these inspections to make it easy for tie gangs to identify replacement ties. Once the ties in need of replacement have been identified, the LTI Tie Set Out solutions will distribute replacement ties exactly where they are needed. BallastSaver® can calculate deficiencies in your ballast profile and automate ballast delivery when integrating with GateSync® software, and Solaris® gates. We're experts in Friction Management installation, unit services, and remote monitoring. Our friction modifiers and gauge face grease are able to deliver benefits to your rail line. Our Geotechnical Services help diagnose and solve problems that affect the condition and performance of railway tracks by seamlessly combining expertise in track roadbed materials, maintenance techniques and data analytics - resulting in an advanced diagnostic profile of the health of your track and identify trends over time for proactive future substructure maintenance program planning. Our innovative monitoring technologies help you manage the status of our infrastructure remotely and our comprehensive engineering services provide the analysis and data that you need.

Website: www.LoramTechnologies.com

MOUNTAIN STATES CONTRACTING, INC. **Physical Location: Same as mailing address**

4001 S. 34th Street
Phoenix, Arizona 85040
TEL: (602) 595-1575
FAX: (602) 595-1708
EMAIL: vern@mscrr.com

Contact: Vern Van de Loo, President

Geographical Area Served: Western U.S.

Contracting or Consulting Services: Railroad; Consulting, Design & Engineering, Free Preliminary Layouts, New Construction, Maintenance, Emergency Repairs, Production Rail, Tie & Surfacing, FRA Track Inspections
Plant or Other Locations: Kingman, AZ; St. Johns, AZ; Grants, NM; Las Vegas, NV; Ogden, UT; Rock Springs, WY

CONTRACTORS/CONSULTANTS

NATURAL STEAM ENERGY

P.O. Box 723
Ripley, West Virginia 25271
TEL: (304) 532-5225
EMAIL: fbowlby@gmail.com

Physical Location:

Contact: Floyd Bowlby

OMAHA TRACK

12930 I Street
Omaha, Nebraska 68137
TEL: (402) 339-0332
FAX: (402) 339-4965
EMAIL: lisa@omahatrack.com

Physical Location: Same as mailing address

Contact: Lisa Roberts, Chief Growth Officer
Jeff Peterson, President
Michael Wickham, Sr. Mngr.
Mkt, Process & Dev

Geographical Area Served: 48 states, Mexico and Canada

Products Produced or Sold: New & Relay Crossties, Switch ties, new & relay rail, OTM, turnouts, bridge& crossing materials; hi-rail trucks & pickups, flash butt welders

Contracting or Consulting Services: Abandoned track removal, on-track rail & tie removal, bridge demolition; CWR loading, transportation and unloading, fixed plant rail welding, co-gen tie grinding & disposal, track evaluation and appraisal

Product Transportation Modes Available: Truck; Rail

Special Equipment or Manufacturing Services: Specialty Hi-rail pickups, grapple trucks, service trucks, cranes, hi-rail bridge inspection trucks; hi-rail sales, service and inspections; crane sales, service and inspections; DOT inspections

Plant or Other Locations: Omaha Track(OT) ; Omaha Track Equipment (OTE) La Crosse, WI; Omaha, NE; Chicago Heights, IL; Springfield, MO; Superior, WI; Pond Creek, Ok; Kennecott Copper, UT; Eaton, Co; Granite City, IL; Parsons, KS; Hazen, NV; Pueblo, CO

Website: www.omahatrack.com; www.omahatrackequipment.com

PAVEMETRICS SYSTEMS (ALSO KNOWN AS RAILMETRICS)

150 Boulevard René-Lévesque Est, Suite 1820
Quebec, (Quebec) Canada G1R 5B1
TEL: (512) 635-9353
FAX: (418) 522-3345
EMAIL: amauricio@pavemetrics.com

Physical Location: Same as mailing address

Contact: Antonio (Tony) Mauricio

Geographical Area Served: North America

Products Produced or Sold at This Facility: LRAIL systems - vision systems for autonomous track inspection

Website: www.railmetrics.com

PRECISION MECHANICAL ENGINEERING

315 Highland Lane
Sewickley, Pennsylvania 15143
TEL: (814) 322-6243
EMAIL: rrager@pme-llc.com

Physical Location: Same as mailing address

Contact: Ross Rager, Ower/Principal Engineer

Geographical Area Served: US - Lower 48

Contracting or Consulting Services: Mechanical Engineering, Machine Design, Stress Analysis, Plant Layout, Project

Website: www.pme-llc.com

CONTRACTORS/CONSULTANTS

RAILROAD CONSTRUCTION COMPANY, INC.

75-77 Grove Street

Paterson, New Jersey 07503

TEL: (973) 684-0362

EMAIL: JosephD@rccmail.net; LisaT@rccmail.net

Geographical Area Served: NJ, NY, PA, DE, CT, MA, RI, VA,

MD, FL, ME, DC, NC, SC, OH, VT

Contracting or Consulting Services: Established in 1926, Railroad Construction Company, Inc. (RCC) has over nine decades of experience in the rail industry. Originally offering railroad track construction and maintenance services, the company has since developed into a full-service general contractor. With experience and expertise in all areas of track, civil and building construction. Services include railroad track installation, track maintenance, track removal, excavation, grading, site work, utility installation, structural concrete, building fit-out, building construction and rehabilitation, bridge construction and rehabilitation and roadway construction.

Plant or Other Locations: Eatontown, NJ; Edison, NJ, Georgetown, DE and New Castle, DE

Website: www.railroadconstruction.com

Physical Location: Same as mailing address

Contact: Joseph Daloisio, Track Division Mngr.

Lisa Tackach, Business Development

RAILROAD GROUP, LLC

705 Mantua Ave.

Paulsboro, New Jersey 08066

TEL: (856) 423-2220

FAX: (856) 423-9389

EMAIL: chris@railnj.com; NMorina@RailNJ.com;

Vinay@RailNJ.com; JJordie@RailNJ.com; GMclennan@JJD-electric.com;

Geographical Areas Served from this Facility: NJ, DE, MD, PA, and

the other Atlantic Coastal States. New England

States, NY, OH, MI, WV and any other state in which a large project is located.

Special Equipment or Manufacturing Services Offered: Mark II, III and IV tampers; Flash Butt Welding Truck; Electrical Power Systems Installation & Maintenance (includes Solar); Signal Work.

Products Produced or Sold at This Facility: Relay Track materials; Tie Inserters and Ballast Cars...also have the ability to manufacture custom items

Rail Loading Points: Paulsboro, NJ, with the ability to unload Center Beam Cars

Treatment Processes Used at this Facility: N/A

Plant or Other Locations: Railroad Construction Company of South Jersey, Inc.; Railroad Constructors, Inc.;

JJD Electric LLC; 3D Railway Services, LLC

Website: www.RailNJ.com; JJD-electric.com

Physical Location: Same as mailing address

Contact: Christofer Daloisio, President

Nick Marina, VP, Railroad

Construction, Co.

Greg McLennan, JJD Electric

Vinay Mudholkar, Director,

Program Mngt.

Jim Jordie, Project Development

Manager

RESIDCO

70 W. Madison, Suite 2200.

Chicago, Illinois 60602

TEL: (312) 726-4163

FAX: (312) 726-3690

EMAIL: bahnline@residco.com

Physical Location: Same as mailing address

Contact: Kevin Bahnline, Director of Marketing

SHELBY RAILROAD SERVICES

3021 Shelby Drive

Memphis, Tennessee 38118

TEL: (901) 365-1068

FAX: (901) 365-1075

EMAIL: shelbyrr@shelbyrr.com

Physical Location: Same as mailing address

Contact: Kirk Tarver

CONTRACTORS/CONSULTANTS

TIMBER PRODUCTS INSPECTION

100 Kedron Drive
Peachtree City, GA 30269
TEL: (770) 922-8000
(573) 330-2173
FAX: (770) 922-1290
EMAIL: tcleve@tpinspection.com; dparker@tpinspection.com

Geographical Area Served: North America

Geographical Area Served: United States, Canada, Europe, South America

Contracting or Consulting Services: Field testing and evaluation of New or Existing Products, Analytical Testing of Preservative systems, Independent Inspection and Auditing services of all Wood products

Website: www.tpinspection.com

Physical Location: Same as mailing address

Contact: Tad Cleve, VP of UPD & Technical Svs.
Donnie Parker, UPD Manager

TRANS CANADA WOOD PRODUCTS, LTD.

Unit 2, 684 Veteran's Drive
Barrie, Ontario Canada L9J 0H6
TEL: (705) 721-1116
FAX: (705) 721-7933
EMAIL: richard@transcanadagroup.on.ca

Geographical Area Served: Canada, United States

Products Produced or Sold: Wooden tie plugs, cedar all sizes and lengths, treated and untreated hyro poles

Product Transportation Modes Available: Truck

Physical Location: 7735 County Rd. 27,
Barrie ON, Canada L9J 0A4

Contact: Richard O'Mara, President
David McCarthy, Sales
Terry Watson, Accounting

TRANS-GLOBAL SOLUTIONS, INC. (TGS)

P.O. Box 1998
Nederland, Texas 77627
TEL: (409) 720-5412
EMAIL: mbyars@tgsgroup.com

Contracting or Consulting Services: Maintenance of railway services, Civil Construction, Locomotive Leasing, Inplant Switching, Transloading, New Rail Construction, Rail Car Storage at TGS Cedar Port Industrial Park, Baytown, Texas

Geographical Area Served: Gulf Coast

Special Equipment or Manufacturing Services Offered: Locomotive Leasing

Plant or Other Locations: TGS Cedar Port Industrial Park, Baytown, TX; TGS Corporate Office, 7500 FM 1405, Baytown, TX

Website: www.tgsgroup.com

Physical Location: 1735 W. Cardinal Dr.,
Beaumont, TX 77705

Contact: Mark Byars, Dir. Project Dev. Rail & Civil



TIES YOU CAN TRUST

At Stella-Jones, we play a key role in the development, upgrade and maintenance of North America’s railroad infrastructure, supplying the continent’s demand for high-quality pressure-treated railway ties and timbers.



CONTINUOUS SUPPLY

Our production capacity and relationships with wood suppliers ensure ample and constant supply.



EXTENSIVE NETWORK

With facilities across the U.S. and Canada, our vast distribution network allows for broad coverage using truck, rail or maritime transport.



QUICK DELIVERY

The agility of our network of wood-treating plants and distribution yards help us offer you the materials you need, when you need them, even under urgent conditions.

A WIDE SELECTION OF PRODUCTS & SERVICES

- CROSSTIES & SWITCH TIES
- BRIDGE TIMBERS & PANELIZED DECKS
- HIGHWAY-GRADE CROSSINGS
- BORATE PRE-TREATMENT
- QNAP BRIDGE TIMBERS

CONTACT US TODAY

1.800.272.8437

WWW.STELLA-JONES.COM



TIES YOU CAN TRUST

At Stella-Jones, we play a key role in the development, upgrade and maintenance of North America's railroad infrastructure, supplying the continent's demand for high-quality pressure-treated railway ties and timbers.



CONTINUOUS SUPPLY

Our production capacity and relationships with wood suppliers ensure ample and constant supply.



EXTENSIVE NETWORK

With facilities across the U.S. and Canada, our vast distribution network allows for broad coverage using truck, rail or maritime transport.



QUICK DELIVERY

The agility of our network of wood-treating plants and distribution yards help us offer you the materials you need, when you need them, even under urgent conditions.

A WIDE SELECTION OF

PRODUCTS & SERVICES

- CROSSTIES & SWITCH TIES
- BRIDGE TIMBERS & PANELIZED DECKS
- HIGHWAY-GRADE CROSSINGS
- BORATE PRE-TREATMENT
- QNAP BRIDGE TIMBERS

CONTACT US TODAY

1.800.272.8437

WWW.STELLA-JONES.COM

WASTE MANAGEMENT/RECYCLING

BLACKWOOD SOLUTIONS, INC.

699 East Dillman Road

Bloomington, Indiana 47401

TEL: (812) 676-8770

EMAIL: jason@bwoodsolutions.com; nathan@bwoodsolutions.com

Geographical Area Served: Continental US

Products Produced or Sold: Crosstie derived fuel, landscape ties Cunloading

Website: www.bwoodsolutions.com

Special Equipment or Manufacturing Services Offered: Hi-Rail Boom Truck Tie Recycling / Disposal, Hauling, etc.

Physical Location: Same as mailing address

Contact: Jason Feagans, President

Nathan Broadfoot, Vice President

KOPPERS RECOVERY RESOURCES

9401 Indian Creek Parkway, Suite 450

Overland Park, Kansas 66210

TEL: (913) 213-6120

EMAIL: SorcherMA@koppers.com

Geographical Area Served: United States & Canada

Products Produced or Sold: Crosstie Derived Fuel ("CDF"); Processing scrap railroad ties into boiler fuel products for waste-to-energy recovery. Provide railroads with a legal and documented means of destruction for used ties, bridge timbers, crossing planks, and other railroad/industrial generated wood waste materials.

Contracting or Consulting Services: Offering scrap railroad tie management and disposal, including hy-rail grapple truck work, legacy tie removal, environmental remediation, and railcar cleaning services

Product Transportation Modes Available At This Site: Railcar, inland river barge, truck (flatbed, end dump, live floor). Operating large fleet of owned/leased high cube gondola rail cars.

Plant or Other Locations: Texarkana, TX, Somerville, TX, L'Anse, MI

Multiple Class 1 rail-served tie disposal facilities, as well as mobile tie processing operations

Physical Location: Same as mailing address

Contact: Mike Sorcher, VP Koppers

Recovery Resources

MIDWEST MISSOURI CONTRACTORS

9309 Wollard Blvd.

Richmond, Missouri 64085

TEL: (816) 654-4064

EMAIL: office@mwmo.net

Products Produced or Sold: Crosstie derived fuel, landscape ties

Contracting or Consulting Services: Crosstie handling, disposal and recycling. Hi-rail truck service, rail handling, disposal and recycling. Railcar loading, unloading and material transloading. Track construction and abandonments. Bridge construction and demolition. Flagging and construction management services. Vegetation control

Website: www.midwest-mo.com

Special Equipment or Manufacturing Services Offered: Hi-Rail Grapple Trucks, Hi-Rail pick-ups, flat beds, end dumps, excavators, Jackson 6700 tamper and Kershaw ballast regulator

Physical Location: Same as mailing address

Contact: Randy Huffman, Director
of Operations

NATIONAL SALVAGE & SERVICE CORP.

P.O. Box 300

Clear Creek, Indiana 47426

TEL: (812) 339-9000 or (800) 769-8437

FAX: (812) 331-8235

EMAIL: rob.underwood@nssccorp.com

Geographical Area Served: U.S., Canada, Mexico

Products Produced or Sold: Recycled rail, railroad ties, and other relay track materials

Contracting or Consulting Services: Tie removal and disposal, rail change-out and abandonment.

Special Equipment or Manufacturing Services Offered: Recycling of railroad ties for fuel; company fleet of centerbeam flatcars and gondola cars

Physical Location: 6755 S. Old State Rd. 37,
Bloomington, IN 47401

Contact: Rob Underwood,
Rail Material Sales Manager

WASTE MANAGEMENT/RECYCLING

RAY'S TRANSPORTATION, INC.

DBA East Coast Railroad Services
42 Argenio Drive
New Windsor, New York 12553
TEL: (845) 565-7210
FAX: (845) 565-7229
EMAIL: Deb@RaysTransportation.com

Geographical Area Served: New York, New Jersey, Eastern Pennsylvania, Connecticut, Rhode Island, Massachusetts, Maryland, and Delaware
Products Produced or Sold: Relay railroad ties, relay rail, OTM and preplated crossties
Contracting or Consulting Services: Removal and lawful disposal/reuse of wood and concrete crossties; Boom truck and operator rental, Fully Operating & Insured Construction and Demolition Debris Facility.

Website: www.RaysTransportation.com or www.EastCoastRailroadServices.com

Product Transportation Modes Available At This Site: Flatbed, dump, boom trucks, and railcars (CSX)

Special Equipment or Manufacturing Services Offered: Transload from Truck to Rail, Truck Self-loading & Transporting, Material Handling, Preplating New and Relay crossties

Physical Location: Same as mailing address

Contact: Debra C. Stackhouse

THE LATTIMORE COMPANY

1200 Summit Avenue, Suite 770.
Fort Worth, Texas 76102-4400
TEL: (817) 312-6347
FAX: (443) 339-2345
EMAIL: jim@lattimorecompany.com

Geographical Area Served: United States and Mexico

Website: www.lattimorecompany.com

Contracting or Consulting Services: Provides services for market development and sales of used rail ties and other waste products to complete the beneficial re-use cycle.

Products Produced or Sold: Chipped wood for use as an alternative fuel

Product Transportation Modes Available: Rail and truck

Special Equipment or Manufacturing Services: Handling, sorting, and grinding equipment

Rail Loading Points: Negotiated based on customer demands

Physical Location: Same as mailing address

Contact: Jim Lattimore, Owner

TIENERGY LLC

PO Box 729
Hampshire, IL 60140
TEL: (847) 426-6354
FAX (847) 426-0146
EMAIL: greg@mwcompanies.com

Website: www.tienergy-usa.com

Geographical Area Served: Continental U.S.

Products Produced or Sold: Biomass fuel and TIEROC

Contracting or Consulting Services: Destruction and Recycling of expired railroad ties from the point of removal as a environmentally sound practice.

Product Transportation Modes Available: Fleet of semi-tractors, 125 yd walking floor trailers, 55-yard end dump trailers and 125-yard walking floor and tipper trailers. 125 yd tipper trailers and 55-yd end-dumps.

Special Equipment or Manufacturing Services Offered: Processing equipment to produce Biomass fuel and TIEROC. Multiple CBI Grinders, Serco knuckle-booms and end-loaders available

Treatment Processes Used At This Facility: Sorting & processing of biomass material for beneficial reuse in Energy plants & TIEROC application.

Physical Location: 270 N. State St.
Hampshire, IL 60140

Contact: Steve Berglund, President
Greg Kutschke, Vice President

WASTE MANAGEMENT/RECYCLING

THE TIE GUY

4544 Summit Valley Rd.
TEL: (760) 927-0050
EMAIL: sales@usedrailroadties.com

Contact: Del Lilley, Owner

Products Produced or Sold: Buy and sell landscape ties

Geographical Area Served: California, Nevada, and Arizona

Special Equipment or Manufacturing Services Offered: Flat bed and End Dumps for pick up and delivery's

WASTE HUB, LLC

5796 S. Kittredge Ct.
Centennial, Colorado 80015
TEL: (815) 342-0634
EMAIL: cwohlert@waste-hub.com

Physical Location: Same as mailing address

Contact: Calvin Wohlert, CEO

Products Produced or Sold: Wide variety of waste streams handled

Geographical Area Served: USA, Canada, Mexico

Website: www.waste-hub.com

Special Equipment or Manufacturing Services Offered: Solving Challenging waste problems to create higher value and sustainability

Contracting or Consulting Services: Helping our customers with challenging waste streams

ZWICKY PROCESSING & RECYCLING, INC.

220 Buena Vista Road
Fleetwood, Pennsylvania 19522
TEL: (484) 248-5300
FAX: (484) 248-5301
EMAIL: dzwicky@wdzwick.com

Physical Location: Same as mailing address

Contact: Chris Zwicky, President
Dave Zwicky, Vice President

Geographical Area Served: Southeast, Mid-South, and Mid-West

Website: www.zwickyrecycles.com

Special Equipment or Manufacturing Services Offered: Fully permitted PA DEP approved processing and recycling facility with the ability to end any liability associated with your waste through our de-wasting to beneficial use process. Large industrial grinders, sorting, and processing equipment for manufacturing engineered biomass fuel for beneficial reuse. Fully functional high capacity modern sorting and processing equipment.

Contracting or Consulting Services: Processing, screening, and blending municipal and residual debris including RR ties, utility poles, and construction and demolition debris for manufacturing into engineered biomass fuels and other recycled products. Product Transportation Modes Available At This Site: Full truck offloading for any type of truck delivering to the facility. Limited rail access via an off-site rail spur.

Rail Off-Loading Site: Leesport, PA

Treatment Processes Used At This Facility: Sorting, processing, screening, blending, to make a de-wasted engineered biomass fuel for beneficial reuse.

You Make 'em, We Stack 'em

MADE IN USA

Brewco DP-5000 Stacker

PATENTED

Call Mike
To Order
Yours Today



270.754.5847



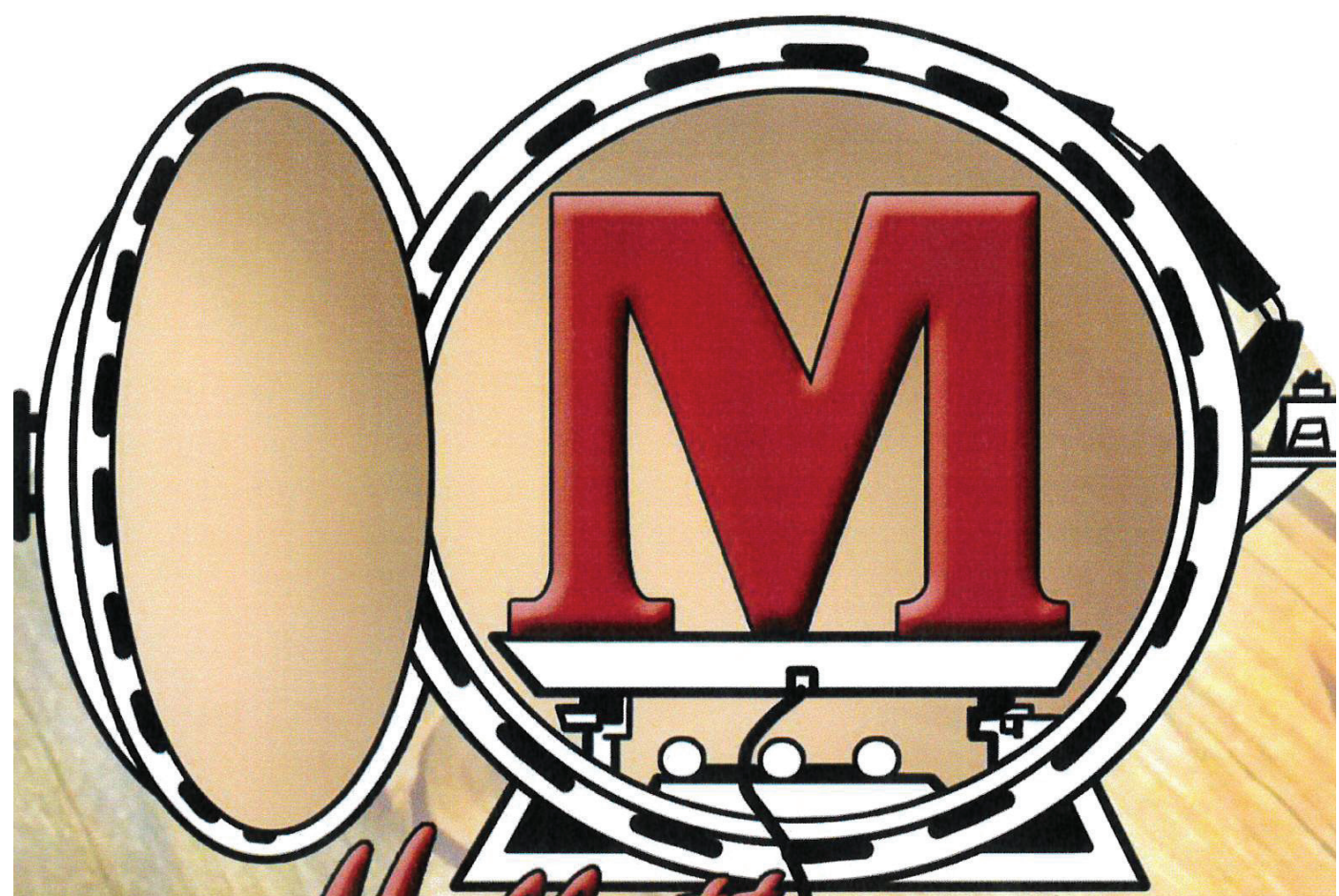
SCAN FOR
STACKER VIDEO



270.754.5847

www.brewcoinc.com





Mellott wood preserving inc.

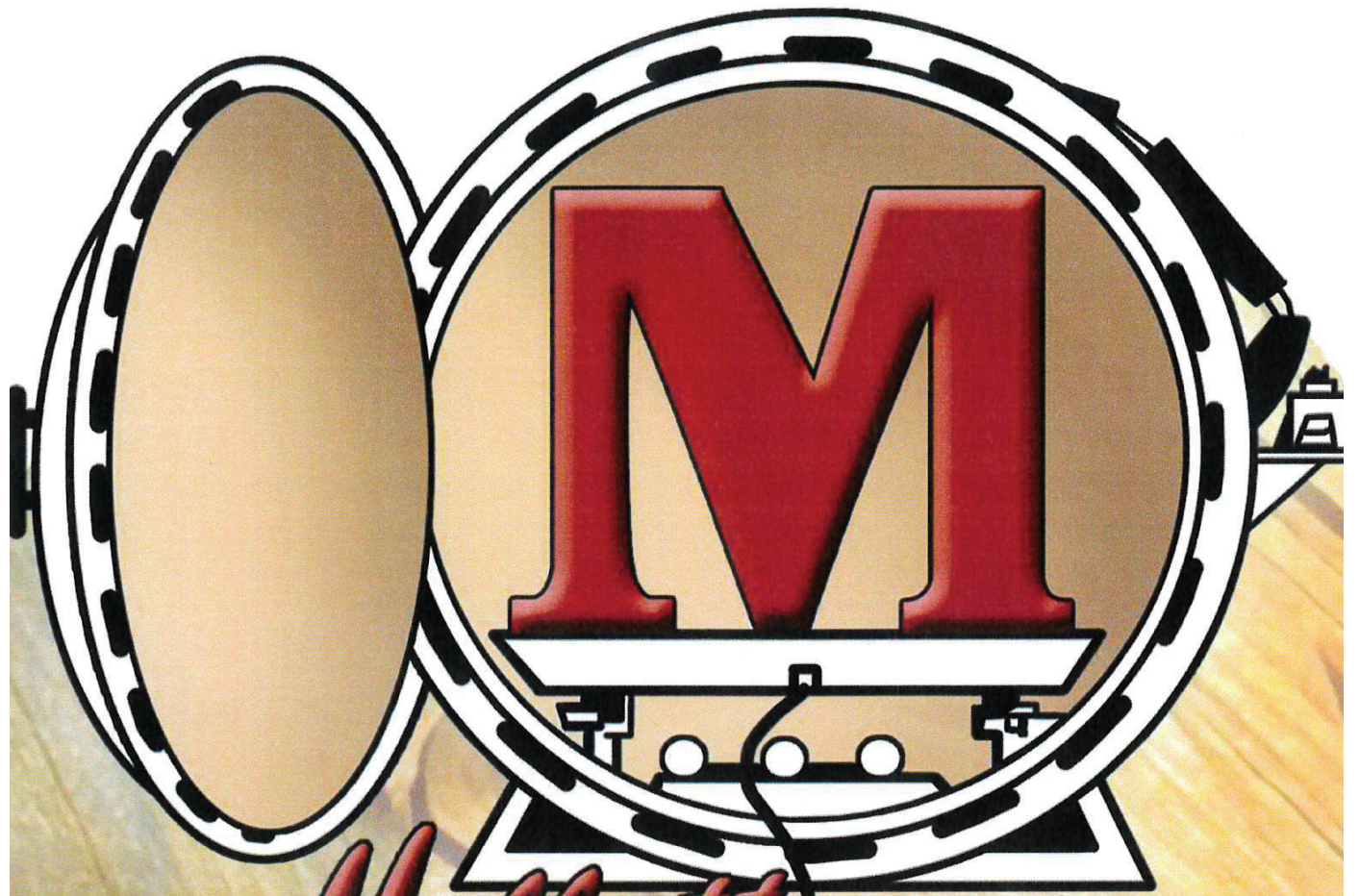
CROSSTIES

SWITCH TIES

BRIDGE TIMBERS

717-573-2519

1398 Sawmill Road
Needmore, Pennsylvania 17238



Mellott wood preserving inc.

CROSSTIES

SWITCH TIES

BRIDGE TIMBERS

717-573-2519

1398 Sawmill Road
Needmore, Pennsylvania 17238

ASSOCIATE MEMBERS

Full Name	Company	Address
Casey Anderson	Mississippi Forestry Association	6311 Ridgewood Road, Suite W405, Jackson, MS 39202
Kevin Archer	Viance, LLC	8001 IBM Drive, Charlotte, NC 28262
Chase Armstrong	R. J. Corman Railroad Group, LLC	101 RJ Corman Drive, Nicholasville, KY 40356
Robert Baeppler	Viance, LLC	3050 N. Galena Road, Sunbury, OH 43074-8357
Adam Bankston	BNSF Railway	2600 Lou Menk Drive, Fort Worth, TX 76131
Bob Bauer	Kentucky Forest Industries Association	106 Progress Drive, Frankfort, KY 40601
T. Jeremy Beasley	US Army Corps of Engineers	3909 Halls Ferry Road, Vicksburg, MS 39180-6199
Stephen Bosela	Norfolk Southern Corp.	650 West Peachtree Street NW, Box 45, Atlanta, GA 30308
Dave Bozarth	Union Pacific Railroad	1400 Douglas St, Stop 0910, Omaha, NE 68179
Max Braswell	Arkansas Forestry Association	1213 W 4th St., Little Rock, AR 72201
Kevin Conn	Norfolk Southern Corp.	209 Shenandoah Ave. NE, Suite 77, Roanoke, VA 24016
Matthew Dennys	CPKC	7550 Ogden Dale Rd. SE, Calgary, AB T2C 4X9
Dante DeVency	MxV Rail	PO Box 19258, Colorado City, CO 81019
Lindsey DiGangi	Pennsylvania Lumbermens Mutual Insurance Company	2005 Market Street, Suite 1200, Philadelphia, PA 19103
Zach Dombrow	BNSF Railway	1011 NE River Road, Topeka, KS 66616
Jeff Doran	Florida Forestry Association	PO Box 1696, Tallahassee, FL 32302
Bruce Emberly	Canadian National Railways, Retired	1116 Riverdale Ave., Cornwall, ON K6J 5E5
Larry Fenwick	CSX Transportation	500 Water Street, J350, Jacksonville, FL 32202
Leah Fletcher	Norfolk Southern Corp.	650 W Peachtree St, Atlanta, GA 30309
Michael Franke	Amtrak, Retired	3526 Pottawattomie Trl, Michigan City, IN 46360
Erik Frohberg	BNSF Railway	2600 Lou Menk Drive, OOB 3rd Floor, Ft Worth, TX 76131
Yin Gao	MxV Rail	350 Keeler Pkwy, Pueblo, CO 81001
R.D. Griffeth	BNSF Railway	2650 Lou Menk Dr., Fort Worth, TX 76131
Sheila Gudenrath	Union Pacific Railroad	1400 Douglas Street, Stop 0780, Omaha, NE 68179
Michael Henderson	BNSF Railway	108 lilypad bnd, Argyle, TX 76226
John Husa	Viance LLC	8001 IBM Drive, Charlotte, NC 28262
Robert Johnson	BNSF Railway	1700 N Kansas Ave, Bldg #3, Springfield, MO 65803
Dustin Juneau	Norfolk Southern Corp.	650 W Peachtree St NE, Atlanta, GA 30308
Ronald Kaye	Illinois DOT	430 Earl Ave., Joliet, IL 60436-1904
Mark Mankowski	US Forest Products Laboratory	Forest Service, 201 Lincoln Green, Starkville, MS 39759
Joshua Marschke	CSX Transportation	500 Water St, J350, Jacksonville, FL 32202
Calvin Matthews	CSX Transportation	CSX Transportation, 800 Chesapeake Ave, Baltimore, MD 21225
Michael McGhee	MARTA	2400 Piedmont Road, NE, Atlanta, GA 30324
Jeffrey Morrell	Oregon State University	Department of Wood Science & Engineering, Oregon State University, Corvallis, OR 97331
Corey Plunkett	Norfolk Southern Corp.	650 West Peachtree Street NW – Box 29, Atlanta, GA 30308
Amie Proudfit	Watco Companies, LLC	8000 W 110th St, Suite 200, Overland Park, KS 66210
Ryan Reyes	Watco Companies, LLC	8000 W. 110th St, Overland Park, KS 66210
Shane Rice	Norfolk Southern Corp.	188 Hancock Mountain Trail, Waleska, GA 30183
Jerry Rose	University of Kentucky	161 Raymond Building, University of Kentucky, Lexington, KY 40506

ASSOCIATE MEMBERS

Full Name	Company	Address
Michael Sanders	Mississippi State University - Dept. of Sustainable Bioproducts	PO Box 9820, Mississippi State, MS 39762
Scott Sandoval	Genesee & Wyoming	13901 Sutton Park Drive South, Building C, Suite 270, Jacksonville, FL 32224
Todd Schoffstoll	Viance LLC	8001 IBM Drive, Charlotte, NC 28262
Matt Seinfeld	Genesee & Wyoming	13901 Sutton Park Drive South, Building C, Suite 270, Jacksonville, FL 32224
Hetal Shah	Starmed Consultants	5297 W Angela Dr, Glendale, AZ 85308
Nilesh Shah	Starmed Consultants	5297 W Angela Dr, Glendale, AZ 85308
Michael Skeen	CSX Transportation	500 Water Street, 4th Floor, Jacksonville, FL 32202
Michael Smith	Finger Lakes Railway Corp.	PO Box 1099, Geneva, NY 14456
John Smith	Pennsylvania Lumbermens Mutual Insurance Company	2005 Market Street, Suite 1200, Philadelphia, PA 19103
Stephen Smith	Stephen Smith Consulting	2008 5th Avenue, Helena, MT 59601
Patrick Smotek	BNSF Railway	PO Box 46, Lyons, TX 77863
Kevin Stickel	CPKC	7550 Ogden Dale Road SE, Calgary, AB T2C 4X9
Kristine Storm	Genesee & Wyoming	13901 Sutton Park Drive South, Building C, Suite 270, Jacksonville, FL 32225
Daniel Torres	Union Pacific	1400 Douglas St., Stop 0910, Omaha, NE 68179
Michael Tupholme	TD Securities Inc.	66 Wellington Street West, 7th Floor, Toronto, ON M5K 1A2
Buck Vandersteen	Louisiana Forestry Association	PO Box 5067, Alexandria, LA 71307
Jorge Velez	CPKC	427 W 12th St., Kansas City, MO 64105
Anthony Weiss	BNSF Railway	1291 Route 41 South, Galesburg, IL 61401
Jonathan Whitehead	Viance, LLC	226 S. Roan St., Elizabethton, TN 37643

GLOBAL MEMBER

Full Name	Company	Address
Elizondo Trevino	Forestal Sierra Madre, S.A. de C.V. (FSM)	Ave. Industrias #700 Parque Industrial Escobedo, Escobedo, NL 66062

HONORARY MEMBERS

Full Name	Company	Address
Marshall Allen	Allen Railroad Services, Retired	2600 Inverrary Dr., Ennis, TX 75119
Gary Ambrose	Koppers Inc., Retired	309 Pine Valley Drive, Bridgeville, PA 15017
Archie Arthur	Archie Arthur	2228 Marcia Dr, Orange Park, FL 32073
Plywood Association	American Plywood Association	7011 S 19th St, Tacoma, WA 98466
Chuck Baker	ASLRRA	50 F Street NW, Suite 500, Washington, DC 20001
Joe Balich	Amsted RPS- Retired	252 Magnolia Dr., Nebo, NC 28761
Kirk Bastyr	Progressive Railroading	2100 W. Florist Avenue, Milwaukee, WI 53209
Ronald Batory	RBX, LLC	7 Sobre Los Cerros, Santa Fe, NM 87506
Mark Bear	NHLA	1767 CR27, Berry, AL 35546
Guy Beaudoin	Canadian National Railways, Retired	1640 Turgeon, Brossard, QC J4W 3H5
Larry Belfiore	Union Pacific Railroad, Retired	10249 Cimmaron Woods Drive, La Vista, NE 68128

HONORARY MEMBERS

Full Name	Company	Address
Butch Bernhardt	Western Wood Preservers Institute	12503 SE Mill Plain Blvd #205, Vancouver, WA 98684
James Beyerl	CSX Transportation, Retired	205 Hollywood Forest Drive, Fleming Island, FL 32203
Phil Bird	Timber-Tie Technology, Inc.	256 Markham Place, Beaconsfield, QC H9W 2B6
David Bischel	California Forestry Association	1215 K St, Ste 1830, Sacramento, CA 95814
Shelley Bishop	National Forest Service Library	One Gifford Pinchot Drive, Madison, WI 53726
Cal Bole	Eagle Metal Products	23725 S. Glenburn Dr., Sun Lakes, AZ 85248
John Bosshart	BNSF, Retired	7615 Cooper Point Road NW, Olympia, WA 98502
Frank Brady	Pandrol USA, Retired	PO Box 367, Bridgeport, NJ 8014
Brad Brenneman	Norfolk Southern Corp., Retired	152 Grace Road, Apt 52, Altoona, PA 16602
Harry Bressler	Stella-Jones Corporation, Retired	242 Pond Lane, DuBois, PA 15801
Nicole Brewin	Railway Supply Institute	425 Third Street, S.W., Suite 920, Washington, DC 20024
Dallin Brooks	NHLA	PO Box 34518, Memphis, TN 38184
Brian Brookshire	Missouri Forest Products Association	505 East State Street, Jefferson City, MO 65101
Cole Browning	2023-2024 Scholarship Winner	133 Lakeview Lane, Pickensville, AL 35447
Jessica Cajas	Railway Track & Structures	20 South Clark Street, Suite 2450, Chicago, IL 60603
David Caldwell	Hardwood Market Report	780 Ridge Lake Blvd., Suite 102, Memphis, TN 38120-9426
Camille Campbell	ASLRRRA	50 F Street NW, Suite 500, Washington, DC 20001
Tim Carey	Carey Timber Protection Consulting, LLC	P.O. Box 872, Greensboro, GA 30642
James Carr	Lumbermen's Equipment Digest	2508 Pillow Dr., Columbia, TN 38401-4375
Jim Carter	Norfolk Southern, Retired	690 Boardwalk Drive, Moneta, VA 24121
Beth Caruso	American Railway Engineering & MOW Association	4501 Forbes Blvd., Suite 130, Lanham, MD 20706
Louis Cerny	American Railway Engineering & MOW Association, Retired	310 Summit Hall Rd, Gaithersburg, MD 20877
Jonathan Chalon	Simmons-Boardman Publishing Corp.	55 Broad Street, 26th Floor, New York, NY 10004
Brian Clark	Horry-Georgetown Technical College	Forest Technology Dept., 4003 South Fraser Street, Georgetown, SC 29440
Sam Cockrel	Sam Cockrel	39 Hospital Drive, Metropolis, IL 62960
Dana Cole	Hardwood Federation	1101 K Street NW, Suite 700, Washington, DC 20005
David Connell	Union Pacific, Retired	4012 Maltese Ct., Punta Gorda, FL 33950
Terry Conners	University of Kentucky, Retired	216 Shady Lane, Lexington, KY 40503
Randall Corner	BNSF, Retired	1000 East Thoman Street, Springfield, MO 65803
H.T. Crouch	H.T. Crouch	1118 Melrose Ave, Florence, SC 29505
Bob Cunningham	Canada Crossties	837 McCurdy Road East, Kelowna, BC V1X 8G3
Richard Currier	New Hampshire Central Railroad, Retired	33 Misty Oak Drive, Concord, NH 3301
Fern da Silva	FERNWOOD FPS Inc., Retired	4434 Jolicoeur, Pierrefonds, QC H9H 2B3
David Davis	Transportation Technology Center, Inc.	PO Box 11130, Pueblo, CO 81001
Allison DeFord	North American Forest Foundation	PO Box 57, Collierville, TN 38027
Doug Delmonico	Encore Rail Systems, Inc., Retired	2350 West Midway Boulevard, Broomfield, CO 80020
Bob DeMarco	Railway Track & Structures- Retired	20 South Clark Street, Suite 2450, Chicago, IL 60603
Marcus Dersch	University of Illinois	205 N. Matthews Ave., Urbana, IL 61801
Candace Dinwiddie	Tennessee Forestry Association	2605 Elm Hill Pike, Suite G, Nashville, TN 37214
Norman Doerr	Norman Doerr	25440 S Flame Tree Dr, Sun Lakes, AZ 85248

HONORARY MEMBERS

Full Name	Company	Address
Craig Domski	Union Pacific Railroad, Retired	16247 California Street, Omaha, NE 68118
John Dorka	Ohio Forestry Association, Inc.	507 Main Street, Suite 202, Zanesville, OH 43701
Buddy Downey	Stella-Jones Corporation, Retired	3798 Parkersburg Rd., Reedy, WV 25270
Conrad Dugan	Koppers Inc., Retired	219 Sonoma Valley Drive, Cary, NC 27518
Tod Echler	CSX Transportation, Retired	8910 Oldenburg Dr., Fairhope, AL 36532
K.C. Edscorn	K.C. Edscorn	420 S. Kirkwood Rd., Apt. 402, Kirkwood, MO 63122
Riley Edwards	University of Illinois	205 N. Matthews Ave., Urbana, IL 61801
Emma Ehrenhart	University of Illinois	1239B Newmark Engineering Laboratory, MC-250, 205 N. Matthews Ave., Urbana, IL 61801
Bruce Emberly	Canadian National Railways, Retired	1116 Riverdale Ave., Cornwall, ON K6J 5E5
Kevin Evilsizer	NHLA	PO Box 34518, Memphis, TN 38184
Jerry Farley	Pacific Wood Services	4459 SE Sweetbriar Ln, Troutdale, OR 97060
Pat Foran	Progressive Railroading	2100 W Florist Ave, Milwaukee, WI 53209
Douglas Fox	Stella-Jones Corporation, Retired	699 Cypress Pointe Drive, Lenoir City, TN 37772
Bob Fronczak	Association Of American Railroads, Retired	101 Wisely Square Lane, Gaithersburg, MD 20877
Martin Fry	Oklahoma Forestry Association	511 N. 6th St., Hugo, OK 74743
William Gadd	Appalachian Timber Services, Retired	113 Chalet Lane, Prestonsburg, KY 41653
Camille Galdes	Open Road Digital	2011 N. Nelson St., Arlington, VA 22207
James Gauntt	Railway Tie Association, Retired	378 Trials Gap Drive, Waynesville, NC 28786
Edward Gentsch	Edward Gentsch	4008 Via Pima, Palos Verdes Estates, CA 90274
Terry Gillis	Recovery 1, Inc.	1805 Stewart Street, Tacoma, WA 98421
Terry Good	Lashly & Baer	714 Locust St, Saint Louis, MO 63101
John Gray	Association Of American Railroads	425 Third Street SW, Suite 1000, Washington, DC 20024
William Grove	Genesee & Wyoming	13901 Sutton Park Dr South, Suite 270, Jacksonville, FL 32224
Don Guillen	Association of American Railroads	55500 DOT Rd., Pueblo, CO 81001
John Gunter	Illinois Forestry Association	4055 Fawn Dr, Marion, IL 62959
Robert Hahn	Robert Hahn	2636 NW 118th St, Oklahoma City, OK 73120
Ramez Hajj	University of Illinois	The Grainger College of Engineering, 205 N. Matthews Ave., Urbana, IL 61801
Lewis Hamilton	Burke-Parsons-Bowlby, Retired	16 Buckskin Ln, Buena Vista, VA 24416
Tommy Harris	Gross & Janes Co, Retired	2303 Old Smackover Road, Camden, AR 71701
Paul Hartgen	National Association of Manufacturers	733 10th Street NW, Suite 700, Washington, DC 20001
Keith Hartwell	Chambers, Conlon & Hartwell	410 1st SE FL 2, Washington, DC 20003-1867
Anthony Hatch	ABH Consulting	1230 Park Avenue Suite 4A, New York City, NY 10128
Byron Hawkins	Webster Industries, Retired	3947 Piedmont Lake Rd, Pine Mountain, GA 31822
Chuck Hegberg	reGENESIS Consulting Services	3408 Smoketown Rd., Spring Grove, PA 17362
Jack Hellmann	Genesee & Wyoming	20 West Ave, Darien, CT 6820
Peggy Herman	Transportation Technology Center, Inc.	PO Box 11130, Pueblo, CO 81001
John Hester	National Hardwood Lumber Association	PO Box 34518, Nashville, TN 38184
Kevin Hicks	TranSystems	1299 Farnam St, Suite 350, Omaha, NE 68102
Fritz Horn	CSX Transportation, Retired	2024 Marye Brant Loop North, Neptune Beach, FL 32266
Renee Hornsby	National Hardwood Lumber Association	PO Box 34518, Memphis, TN 38184

HONORARY MEMBERS

Full Name	Company	Address
Jack Hughes	Norfolk Southern Corp., Retired	164 Bogey Lane, Salem, VA 24153
Tanya Hughes	Hughes Design Group	1712 Sonia St., Pensacola, FL 32502
Gary Hunter	Union Pacific Railroad, Retired	4917 Lillian St., Omaha, NE 68157
Tom Inman	Appalachian Hardwood Manufacturers	PO Box 427, High Point, NC 27261
Chris Isaacson	Alabama Forestry Association	555 Alabama Street, Montgomery, AL 36104
Ian Jefferies	Association Of American Railroads	425 Third Street SW, Suite 1000, Washington, DC 20024
Judd Johnson	Hardwood Market Report	780 Ridge Lake Blvd., Suite 102, Memphis, TN 38120-9426
Andy Johnson	Hardwood Market Report	780 Ridge Lake Blvd., Suite 102, Memphis, TN 38120
Clif Jones	Osmose, Inc., Retired	P.O. Box 20011, St. Simons Island, GA 31522
Linda Jovanovich	Hardwood Manufacturers Association	665 Rodi Road, Suite 305, Pittsburgh, PA 15235
Jeff Keller	WWPI	12503 SE Mill Plain Blvd., Suite 205, Vancouver, WA 98684
Laya Khademibami	Mississippi State University	PO Box 9820, MS State, MS 39759
Kenneth Kirby	Kenneth Kirby	1205 Schuman Ln, Petaluma, CA 94952
Merle Klink	Koppers Inc., Retired	1185 Airedale Drive, Bethel Park, PA 15102
Matthew Konkler	Oregon State University	Wood Science & Engineering, 238 Richardson Hall, Corvallis, OR 97331
Nick Kosar	Creosote Council	9438 Shouse Drive, Vienna, VA 22182
Richard Krause	Norfolk Southern Corp., Retired	13432 Thoroughbred Drive, Dade City, FL 33525
John Kress	Koppers Inc., Retired	13767 Yelma Street, Venice, FL 34293
Paul Krotts	JH Baxter & Company	1490 Wilson Ct, Eugene, OR 97402
Curtis Kyger	Union Pacific Railroad, Retired	815 Oak Street, Hood River, OR 97031
W.D. Labaugh	W.D. Labaugh	35 Woodbury St, Yarmouth, ME 4096
Lee Laechelt	Alabama Forest Owners' Association	P.O. Box 361434, Birmingham, AL 35236
Petr Ledvina	Petr Ledvina	2401 Candlebrook Dr., Vestavia, AL 35226
University Library	Northwestern University Library	1970 Campus Drive, Level 5, North Tower, Evanston, IL 60208
Natural Resources Library	University Of Minnesota	375 Hodson Hall, Saint Paul, MN 55108-6125
National Forest Service Library	National Forest Service Library	Forest Products Laboratory, One Gifford Pinchot Drive, Madison, WI 53726
Kerry Livengood	TN Division of Forestry	440 Hogan Road, Nashville, TN 37220
Tom Loadman	Koppers Inc., Retired	211 Sussex Way, McMurray, PA 15317
Clyde Lobb	BNSF Railway Company, Retired	325 Oak Tree Point Lane, Shell Knob, MO 65747
Nathan Loftice	BNSF Railway	2500 Lou Menk Drive, AOB-3, Fort Worth, TX 76131
Paul Lyskava	Pennsylvania Forest Products Association	301 Chestnut Street, Suite 102, Harrisburg, PA 17101
John Mabry	John L. Mabry	9714 Ensley Lane, Shawnee Mission, KS 66206
Gene Mall	GDM Landresources Inc.	834 County Road 314, Chamois, MO 65024
H.C. Martin	Hartwell Martin	3823 Franklin RD SW, #109, Roanoke, VA 24014
Jerry Marullo	Railway Age	55 Broad St., 26th Floor, New York, NY 10004
Brent McClendon	NWPCA	1421 Prince St., #340, Alexandria, VA 22314
Charles McCormick III	Charles McCormick III	1535 SW Elizabeth St, Portland, OR 97201
Colin McCown	American Wood Protection Association	PO Box 361784, Birmingham, AL 35236
Jeff McCracken	Norfolk Southern Corp., Retired	150 Rolling Rd., Social Circle, GA 30025

HONORARY MEMBERS

Full Name	Company	Address
John McGinley	Amerities Holdings LLC	2002 Spirit Wood Lane, Edmond, OK 73025
Janzen McKinney	Hardwood Market Review	PO Box 471307, Charlotte, NC 28247
Dan Meyer	Hardwood Review	PO Box 471307, Charlotte, NC 28247
Rolland Meyers	Rolland Meyers.com	33 Ramona Ave, Oakland, CA 94611
Bob Michel	Kerr-McGee, Retired	609 Cattle Baron Road, Fairview, TX 75069
Jeff Miller	Treated Wood Council	1101 K Street NW, Suite 700, Washington, DC 20005
Paul Miller	National Hardwood Magazine	5175 Elmore Rd, Ste 23, Memphis, TN 38134
Alan Miller	Stella-Jones Corp., Retired	9223 Maury River Rd, Goshen, VA 24439
Terry Miller	National Hardwood Magazine, Inc.	PO Box 34908, Memphis, TN 38184-0908
Gayle Minkler	Union Pacific Railroad, Retired	406 Village Lane, Wake Village, TX 75501
Robert Modisette	BNSF Railway Company, Retired	209 Mayo Dr, Bullard, TX 75757
Ray Moistner	Indiana Hardwood Lumbermen's Association	12574 PROMISE CREEK LANE, SUITE 100, FISHERS, IN 46038
Bill Moss	MiTek U.S.A., Retired	131 Wake Forest Place, O'Fallon, MO 63368
Adam Moyer	CSX Transportation	500 Water Street, J430, Jacksonville, FL 32202
Texon Santa Fe Museum	Texon Santa Fe Depot Museum	5821 N. Moss Ave, Odessa, TX 79763
Phil Myers	Cahaba Pressure Treated Forest Products, Retired	16100 NW Canterwood Way, Portland, OR 97229
Timothy Nash	Norfolk Southern Corp., Retired	5383 Glenvar Heights Blvd, Salem, VA 24153
Adam Nordstrom	Viking Navigation LLC	4201 Wilson Blvd. #110-164, Arlington, VA 22203
Clyde Norton	DuraWood Treating, Retired	13 W Augusta CT, Rogers, AR 72758
Jenifer Nunez	Railway Track & Structures	20 South Clark Street, Suite 1910, Chicago, IL 60603
Phillip Ogden	Norfolk Southern Corp., Retired	790 Old Lathemtown Road, Canton, GA 30115
Ray Ohlis	Koppers Inc., Retired	400 Glen Lake Drive, Grenada, MS 38901
Preston Painter	Norfolk Southern Corp., Retired	170 Stonehaven Drive, Dawsonville, GA 30534
Brian Perkins	Land Resources Department	Glenville State College, 200 High Street, Glenville, WV 26351
Ryan Pessah	Western Wood Preservers Institute	12503 SE Mill Plain Blvd., Suite 205, Vancouver, WA 98684
Rusty Pfeiffer	Koppers Inc., Retired	310 South Drive, Valencia, PA 16059
Lisa Pleasants	CSX, Retired	12071 River Plantation Dr., Jacksonville, FL 32223
Ted Pollard	Gemini Forest Products, Retired	236 15th St., Seal Beach, CA 90740
Dan Pollock	BNSF Railway Company, Retired	22253 B Rd, Havensville, KS 66432
Dick Pouzar	Illinois Forestry Association	4055 Fawn Dr, Marion, IL 62959
Dr. James Price	University of Missouri, Field Station	PO Box 6, Naylor, MO 63953
Kevin Ragon	Southern Pressure Treaters' Association	PO Box 1784, Starkville, MS 39760
Carol Sue Ray	Railway Tie Association, Retired	162 Academy Drive, Wilmore, KY 40390
Michael Reid	Oxford Economics	5 Hanover Square, 8th Floor, New York, NY 10004
Richard Reiff	TTCI, Retired	4364 Blueflax Dr., Pueblo, CO 81001
William Rhea	Kop-Coat, Retired	5160 S. Carterton Drive, Gibsonia, PA 15044
Benji Richards	National Hardwood Lumber Association	4270 Brookwood Pl, Lenoir, Nc 28645
Jim Ringe	University of Kentucky - Dept. of Forestry	628 Portland Drive, Lexington, KY 40546
Theresa Romanosky	AAR	425 Third Street S.W., Washington, DC 20024

HONORARY MEMBERS

Full Name	Company	Address
Gerald Roskovensky	Koppers Inc. Retired	186 Hoffman Boulevard, West Milton, PA 17886
Bill Rousis	Norfolk Southern Corp., Retired	331 Spindle Ct., Canonsburg, PA 15317
Christy Sammon	GoRail	425 3rd St. SW, Suite 940, Washington, DC 20024
James Sanders	Kerr-McGee Chemical, Retired	434 Redwood Dr, Farmington, MO 63640
Janet Seaman	Janet Seaman	PO Box 279, Wilton, AL 35187
Sydney Shaffer		1964 Dorwood Drive, Dover, PA 17315-3626
Richard Shelton	Richard Shelton	7446 Spring Village Dr Apt 318, Springfield, VA 22150
Rubin Shmulsky	Mississippi State University	Dept. of Sustainable Bioproducts, Box 9820, Mississippi State, MS 39765-9820
Thomas Simpson	Railway Supply Institute	425 Third Street, SW, Suite 920, Washington, DC 20024
Nicholas Skoulis	Creosote Council	300 Tryon Street, PO Box 423, South Glastonbury, CT 6073
Edward Sparks	CSX Transportation	500 Water Street - J350, Jacksonville, FL 32202
Dana Spessert	National Hardwood Lumber Association	6830 Raleigh LaGrange Road, Memphis, TN 38134
Seth Stephenson	Arkansas Forestry Association	1213 W 4th St., Little Rock, AR 72201
Periodical Subscription	Paul Smith's College Of American Railroads	Route 86 & 30, P.O. Box 265, Paul Smiths, NY 12970
Robert Sumwalt	NTSB, Retired	151 Hampton Crest Trail, Columbia, SC 29209
Ashley Tandy	Indiana Hardwood Lumberman's Association	12574 Promise Creek Lane, Suite 100, Fishers, IN 46038
Martin Tauvette	Wood Preservation Canada	202-2141 Thurston Drive, Ottawa, ON K1G 6C9
Adam Taylor	University of Tennessee	2506 Jacob Drive, Knoxville, TN 37996
Stan Thomas	Stella-Jones Corporation, Retired	19501 Jade Road, Sparta, WI 54656
Andy Thompson	Red River Valley & Western Railroad, Retired	PO Box 1080, Lakebay, WA 98349
Gene Tonsager	Recovery 1, Inc.	1630 East 18th Street, Tacoma, WA 98421
Marie Trevizo	Transportation Technology Center, Inc.	PO Box 11130, 55500 Dot Road, Pueblo, CO 81001
Fred Vander Haag	Pandrol USA, LP, Retired	200 S Jackson Rd, Ludington, MI 49431
Richard Vlosky	Louisiana Forest Products Development Center	School of Renewable Natural Resources, Louisiana State Univ. Agricultural Center, Baton Rouge, LA 70803
Forbes Walker	University of Tennessee, Knoxville	2506 E J Chapman Drive, Knoxville, TN 37996
Scott Waring	Koppers/M.A. Energy Resources Div, Retired	1143 E. Frye Road, Phoenix, AZ 85048
Mike Washko	Virginia Forest Products Association	PO Box 160, Sandston, VA 23150
David Webb	Creosote Council	PO Box 160, Valencia, PA 16059
Mary Webster	Webster Industries, Retired	PO Box 292, Wayzata, MN 55391
Jeremy Whatmough	Jeremy Whatmough	8131 Fieldside Drive, Lakewood Ranch, FL 34240-8533
Ashley Wieland	NRC	7437 Gillingham Row, Alexandria, VA 22315
Alex Williams	Stella-Jones, Retired	1945 Eastline Rd., Bells, TX 75414
Gary Williams	Koppers Inc., Retired	24 Anthony Lane, Troutville, VA 24175
Bill Wimmer	Union Pacific Railroad, Retired	2420 Ponca Pt, Plattsmouth, NE 68048
Andrew Woodard	2023-2024 Scholarship Winner	1267 Patriot Way, Beaver Creek, OH 45434
Allan Zarembski	University of Delaware	Dept. of Civil Engineering, 301 DuPont Hall, Newark, DE 19716
John Zuspan	Track Guy Consultants	934 Royal Ct, Canonsburg, PA 15317

HONORARY MEMBERS

Full Name	Company	Address
University of Chicago Library	University of Chicago Library	1100 E. 57th Street, Serials Management Services, Room 170, Chicago, IL 60637

INDEX OF MEMBERS

Organization Name	Member Type	Page No.
A&K Railroad Materials, Inc.	NP Supplier	31
Acme Wood Preserving Inc.	Producer Direct	11
American Wood Technology	NP Supplier	31
AmeriTies Holdings LLC	Producer Direct	11
Anthony Timberlands Inc.	Producer Direct	11
Appalachian Timber Services, LLC	Producer Direct	12
Applied Testing	Contractor	41
Arkansas Steel Associates	NP Supplier	31
Arxada	Preservative Supplier	27
Asphalt and Fuel Supply, LLC	NP Supplier	31
Atlantic Track & Turnout	Contractor	41
Beal Lumber Co., Inc.	Producer Direct	13
Blackwood Solutions	Waste Management/Recycling	49
BPM Lumber, LLC	Producer Direct	13
Brewco Inc.	NP Supplier	32
BSP Manufacturing	NP Supplier	32
Cooper Machine Company	NP Supplier	32
Coopers Creek Chemical	Preservative Supplier	27
CR Quality Services	Contractor	41
Danella Rail	Contractor	42
DECCO	Producer Direct	13
Eagle Forest Products	Producer Direct	14
Eagle Metal Products	NP Supplier	33
Edwards Wood Products	Producer Direct	13
EHS Support, LLC	Contractor	42
Embry Automation & Controls	NP Supplier	33
Encore Rail Systems, Inc.	NP Supplier	33
Etimine USA, Inc.	Preservative Supplier	27
Forestal Sierra Madre	Global Associate	60
Gemini Forest Products	Producer Direct	14
Genics Inc.	NP Supplier	33
Herzog	Contractor	42
HTP Energy	NP Supplier	33
Industrial Power	NP Supplier	34

INDEX OF MEMBERS

Organization Name	Member Type	Page No.
Intermountain Orient, Inc.	Producer Direct	14
K. L. Barton & Sons Tie Co., Inc.	Producer Direct	15
K.U. Resources, Inc.	Contractor	43
Kop-Coat Inc.	NP Supplier	34
Koppers Inc.	Producer Direct	15
Koppers Inc.	Preservative Supplier	27
Koppers Recovery Resources	Waste Management/Recycling	49
L.B. Foster Company	NP Supplier	34
Lee Inspection & Consulting	Contractor	43
Lewis Bolt & Nut Co	NP Supplier	34
Lone Star Specialties, LLC	Preservative Supplier	28
Loram Technologies	Contractor	43
McCord Tie & Timber, Inc.	Producer Direct	16
McCreary County Hardwoods, Inc.	Producer Direct	16
Mellott Wood Preserving Co.	Producer Direct	16
Menards Railroad Materials	NP Supplier	35
Midwest Missouri Contractors	Waste Management/Recycling	49
Missouri Tie, LLC	Producer Direct	17
MiTek Industries, Inc.	NP Supplier	35
Mountain States Contracting	Contractor	43
National Salvage & Service Corp.	Waste Management/Recycling	49
Natural Steam Energy	Contractor	44
Natural Wood Solutions, LLC	Producer Direct	17
Netterville Lumber Company	Producer Direct	17
Nisus Corporation	Preservative Supplier	28
Norman Lumber Company	Producer Direct	17
North American Tie & Timber LLC	Producer Direct	18
Omaha Track	Contractor	44
Omega Industries	NP Supplier	35
P.T. O'Malley Lumber Co. Inc.	Producer Direct	18
Pandrol USA, LP	NP Supplier	35
Pavemetrics System (Railmetrics)	Contractor	44
Perma Treat Corporation	Producer Direct	18
Precision Mechanical Engineering	Contractor	44
Progress Rail Services	NP Supplier	36
Railroad Construction Company	Contractor	45
Railroad Group, LLC	Contractor	45
Rain Carbon Canada	Preservative Supplier	28
Ray's Transportation	Waste Management/Recycling	50
REMSA	NP Supplier	36
RESIDCO	Contractor	45
Rio Tinto / U.S. Borax	Preservative Supplier	28
Scott Post & Tie Company, Inc	Producer Direct	18
Shelby Railroad Service	Contractor	45

INDEX OF MEMBERS

Organization Name	Member Type	Page No.
Southern Forest Industries Inc.	Producer Direct	19
Stella-Jones Corporation	Producer Direct	19
Stella-Jones Inc. CANADA	Producer Direct	21
Sumitomo Canada Limited	Producer Direct	23
Superior Tie & Timber	Producer Direct	23
Tank Fab Inc	NP Supplier	36
Taylor Machine Works, Inc.	NP Supplier	36
The Lattimore Company	Waste Management/Recycling	50
The Somerville Companies, Inc.	Producer Direct	19
The Tie Guy	Waste Management/Recycling	51
Tie & Timber Technologies	Producer Direct	23
TiEnergy	Waste Management/Recycling	50
Timber Products Inspection	Contractor	46
T-Rail Products	NP Supplier	37
Trans Canada Forest Products	Producer Direct	23
Trans Canada Wood Products Ltd.	Contractor	46
Trans-Global Solutions	Contractor	46
Ward Timber, Ltd	Producer Direct	24
Waste Hub, LLC	Waste Management/Recycling	51
Wheeler Lumber, LLC	Producer Direct	24
Willamette Valley Company	NP Supplier	37
William G. Moore & Son, Inc. of Delaware	Producer Direct	24
Wood Care Systems	NP Supplier	37
Zwicky Processing & Recycling, Inc	Waste Management/Recycling	51





**105TH ANNUAL
SYMPOSIUM AND
TECHNICAL CONFERENCE
October 16-19, 2023
The Westin Buckhead**

**Learning Journal
Sponsored By**



Working Together to Supply Coal Tar Creosote and Petroleum-Based Additives



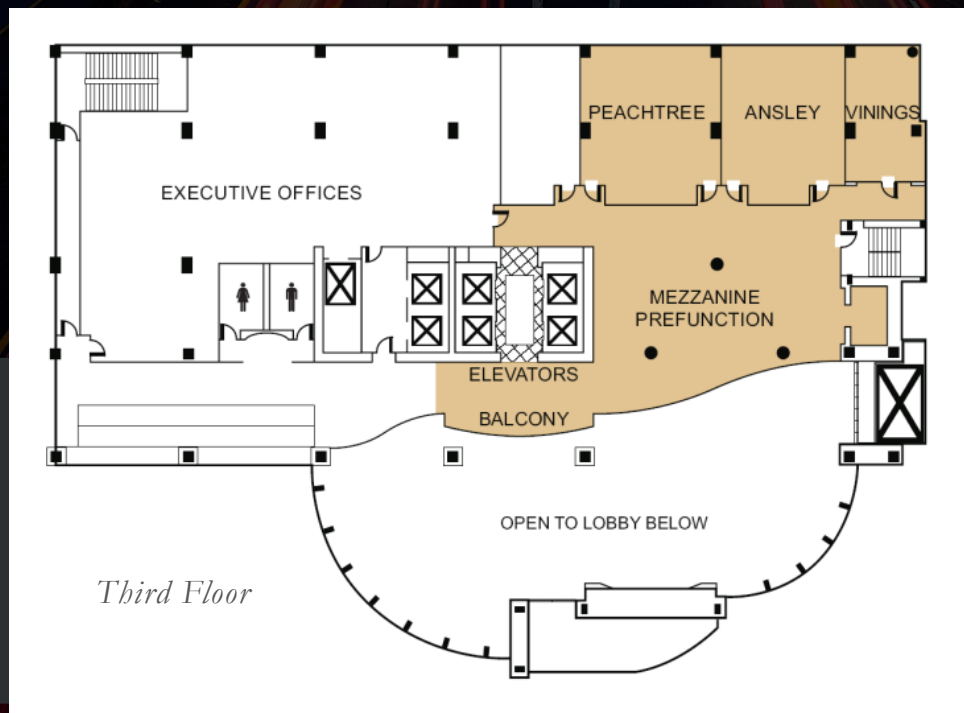
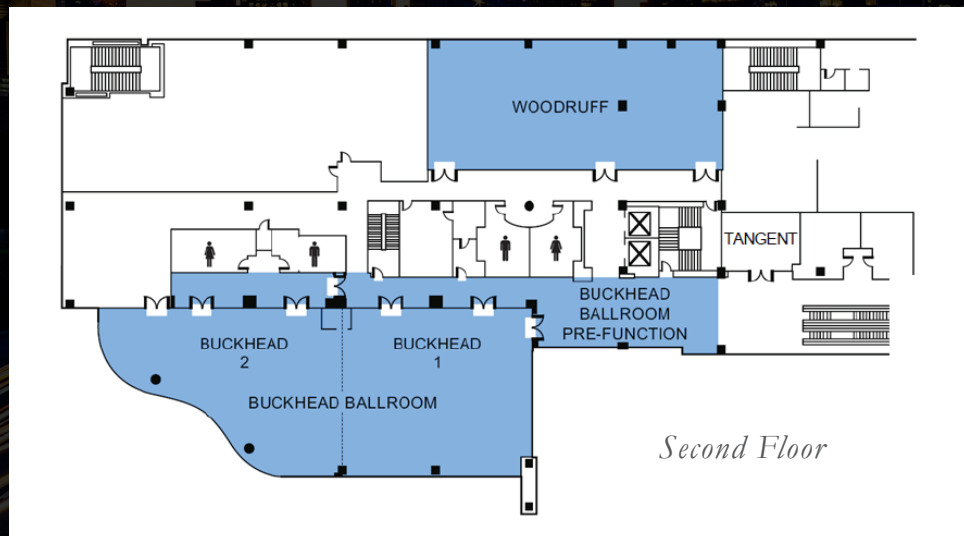
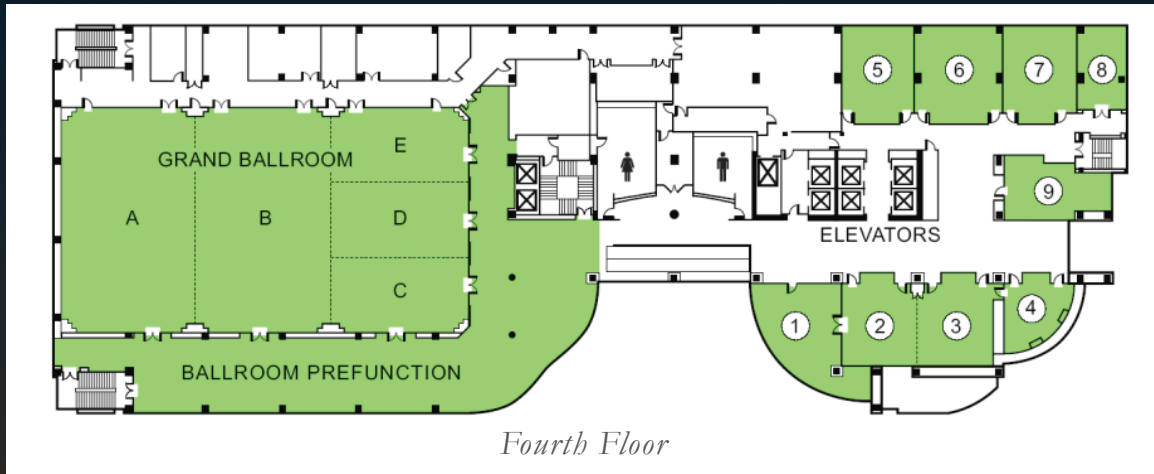


Table Of Contents and Schedule

Monday October 16th

10 am - 5 pm

5:30 - 7 pm

Registration/Exhibit Set-up

Opening Reception (Drinks and Light Food)

Tuesday October 17th

7:00 am - 8:00 am

8:00 am - 8:15 am

8:15 am - 9:15 am

9:15 am - 9:30 am

9:30 am - 10: 00 am

10:00 am - 11:00 am

11:00 am - Noon

Noon - 1:00 pm

5:30 - 7:00 pm

4:00 - 5:30 pm

Breakfast

RTA 2023 Business Session

Keynote Address

RTA Committee Updates

Networking Break

Hardwood Market Perspectives

Governmental Affairs

Lunch in Exhibit Hall

Networking/Private meetings/Optional Event (Atlanta Aquarium)

President's Reception (Drinks and Light Food)

Wednesday October 18th

7:00 am - 8:00 am

8:00 am - 9:30 am

9:30 am - 10:00 am

10:00 am - 11:30 am

*11:00 am

11:30 am - 1:00 pm

1:00 pm - 5:00 pm

5:00 pm

6:00 - 8:00 pm

Breakfast

Research and Innovation

Networking Break

Railroad Engineering

Golfers Depart for Course (12:00 pm Start)

Lunch in Exhibit Hall

Networking/Private/Meetings/Optional Event (Brewery Tour)

Golfers and Tour Return

Grand Reception (Drinks and Full Meal)

Thursday October 19th

7:00 am - 8:00 am

8:00 am - 9:30 am

9:30 am - 11:00 am

11:00 am - 11:30 am

1:00 pm - 5:00 pm

Breakfast

Leading Professionals

Railroad Procurement

RTA 2023 Closing Session

AREMA Committee 30

Friday October 19th

8:00 am - Noon

AREMA Committee 30

RTA Policy Statement on Compliance with Antitrust Laws

The principal goal of the RTA is the collective effort of its members to improve the wood crosstie industry for the mutual benefits of everyone connected to the industry, including the members, their customers, and their suppliers. Achieving this goal depends upon a free exchange of ideas, information, and the cooperation and contribution of all members. In order that each member may participate, confident that its communications and activities are safely within the requirements of the law, the RTA reminds its members that the following practices are not permitted:

- Agreeing to fix or set prices, markups, or the terms of a sale
- Agreeing to fix territories or allocate customers
- Promoting a boycott of any producer or supplier
- Agreeing to limit the quantities of products

The purpose of this policy is to encourage the free exchange of information and to insure compliance with all the applicable laws or regulations. Any member who has a question about any activity or communication is encouraged to bring its concern to the attention of the Association and to consult appropriate counsel.

Monday 16 October

**Exhibit Set-up & Early Registration
Opening Reception
Sponsored By:**



Hospitality Suite

Mon, Oct 16 4:00 – 5:30pm

Tue, Oct 17 4:00 – 5:30pm

Wed, Oct 18 5:00 – 6:00pm & 8:00pm – 10:00 pm

East and West Paces on the 4th Floor

Visit Our Exhibitors



Better science for a better world.



CELEBRATING 125 YEARS



Tuesday 17 October

Opening Keynote

Josh Raglin
Norfolk Southern
Chief Sustainability Officer
Sponsored By:



Committee Updates



Stacey McKinney



Marshall Allen

Hardwood Marketplace Perspectives

Sponsored By:



Dana Cole



Brent McClendon



Mark Bear



David Caldwell

Breakfast Sponsored By:



Tuesday 17 October

Networking Break Sponsored By:



Governmental Affairs Sponsored By:



Patrick Marshall



Zach Redford



Christy Sammon



Andres Villegas

Luncheon and Special Presentation Sponsored

by:



Tim Carey

President's Reception Sponsored By:



Tour Transportation Sponsored by:

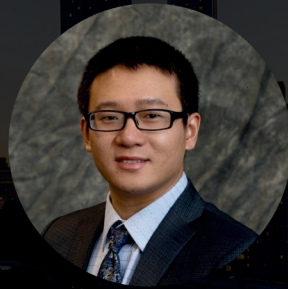


Wednesday 18 October

Research and Innovation Sponsored By:



Jeff Lloyd



Yin Gao



Dante DeVincenty



Dave Webb



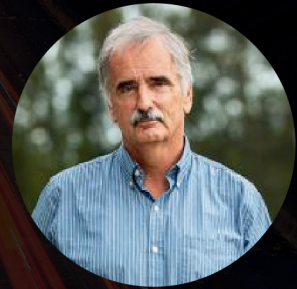
Beth Stokes



Rubin Shmulsky



Laya Khademibami



Jeff Morrell

Breakfast Sponsored By:



Tour Transportation Sponsored By:



Wednesday 18 October

Networking Break Sponsored By:



Railroad Engineering Sponsored By:



Bill Riehl



Ed Sparks



Adam Bankston



Scott Sandoval



Danny Torres



Shane Rice



Garrett King

Lunch Sponsored By:



Wednesday 18 October

Grand Reception and Awards Ceremony.

Sponsored By:



Fellowship:
Mingle with
Suppliers,
Customers and
Community!

Entertainment:
Have a drink,
enjoy a meal, and
share a laugh

Reverence:
Help acknowledge
our fellow members
with awards and
recognition.

2023 Railway Tie Association Award Winners

Broad Axe



Terry Samples
Appalachian Timber Services

Silver Saw



Chad Sorrells
Sorrells Sawmill

Awards Sponsored By:



Thursday 19 October

Leading Professionals Sponsored By:



Stacey McKinney



Stephanie Fuller



Dana Cole



Kim Merritt



Allison DeFord

\$300 Gift Card Sponsored By:



Thursday 19 October

Railroad Procurement Sponsored By:



Sheila Gudenrath



Matt Seinfeld



Bobby Johnson



Leah Fletcher



Joge Velez



David Knopsnider



Aime Proudfit

\$200 Gift Card Sponsored By:



Diamond Sponsors



Platinum Sponsor



Gold Sponsors



Silver Sponsors

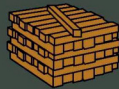
EMBRY
AUTOMATION & CONTROLS

LORAM
Technologies



MISSOURI TIE, LLC.
Railroad Cross Ties

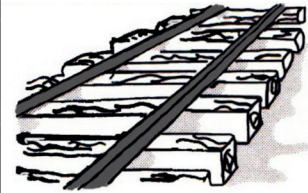
North American



Tie & Timber LLC



NATIONAL



SOMERVILLE

Bronze Sponsors

LONESTAR
ASPHALT & FUEL SUPPLY
Working Together to Supply Coal Tar Creosote and Petroleum-Based Additives



EncoreTM
Rail Systems, Inc.

genics
Wherever Wood Is UsedTM

LEWIS
BOLT & NUT COMPANY

40TH
ANNIVERSARY
1983 - 2023

Bronze Sponsors

Progress Rail
A Caterpillar Company



Wheeler

WOOD CARE SYSTEMS
WOOD PRESERVATIVE & RESTORATION PRODUCTS

Partner Sponsors

AMP...





Committed to Performance since 1892

Fabricated Timber Bridge Ties

Crossing Timbers

Piling

Caps, Guard Timbers, Bracing

Shop Drawings



**Dual Treatment
available utilizing Borates
& BTX plugs**

Every charge is tested and certified to meet or exceed AWPA and AREMA specifications for retention and penetration.

DAVE KOCH

dkoch@wheeler1892.com 605.269.2216

Proud members of



American Short Line and
Regional Railroad Association

